



CATALOGO PRODOTTI
PRODUCTS CATALOGUE

PORTALAMPADA LAMP HOLDERS

Incandescenza
Incandescent

E11	ART. 02	04
E14	ART. 050	05
E27	ART. 089	09
	ART. 090	10
	ART. 0113	11
	ART. 076	15
E40	ART. 077	18
	ART. 083	19
	ART. 084	20

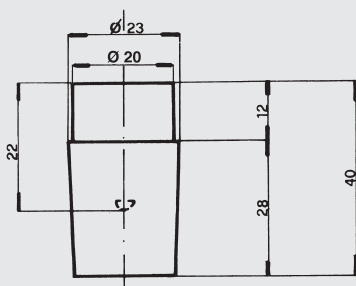
Attacco/Cap

E11

Per lampade ad incandescenza
For incandescent lamps

ART. 02/XX

/XX lunghezza dei cavi in cm da stabilire in fase di ordine
/XX Length of the leads in centimetres to be agreed with the customer



Dati tecnici

- Corpo in porcellana
- Contatto centrale e viola in ottone tornito e nichelato
- Molla del contatto centrale in acciaio inox
- Cavo di collegamento standard: isolamento in gomma siliconica (T max 150°C), lungh. cm 30, sez. AWG 18
- Altri tipi di cavo su richiesta
- Tensione nominale: 250 V
- Corrente nominale: 2A
- Peso: 40 gr.

Nota

Data la particolare resistenza termica del portalampada in porcellana, è indicato anche per l'uso con lampade alogene a tensione di rete.

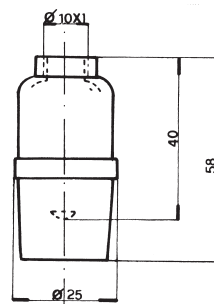
Technical data

- Porcelain body
- Central contact and bulb screw base made of nickel-plated and turned brass
- Central contact spring in stainless steel
- Standard connection cable: silicone rubber insulation (max T 150°C), Length: cm 30, - AWG 18 section
- Other leads could be supplied on request
- Nominal voltage: 250V
- Nominal current: 2A
- Weight: 40 gr.

Notes

In consideration of its particularly high thermal resistance, this porcelain lampholder can be used also with mains voltage halogen lamps.

ART. 02A/XX



Portalamпада assembled with raccordo in ottone pressofuso nichelato. Filetto femmina da 10x1 con vite di bloccaggio Tige. Peso: 66 gr.

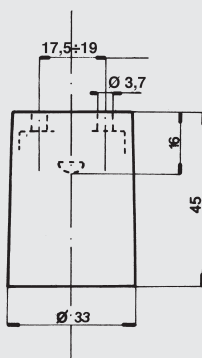
Lampholder assembled with die-casted nickel plated brass connection. 10x1 female thread with Tige blocking screw. Weight: 66 gr.

Attacco/Cap

E14

Per lampade ad incandescenza
For incandescent lamps

ART. 050



Dati tecnici

- Corpo in porcellana
- Contatti in ottone nichelato
- Morsetti a bussola in ottone nichelato idonei per fili 0,5 ÷ 2,5 mm²
- Tensione nominale: 250 V
- Corrente nominale: 2A
- Temperatura max del portalamпада: 200°C
- Peso: 50 gr.

Nota

Data la particolare resistenza termica del portalamпада in porcellana, esso è indicato anche per l'uso con lampade alogene a tensione di rete

Technical data

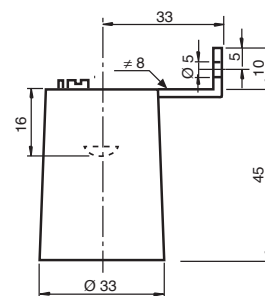
- Porcelain body
- Nickel plated brass contacts
- Connector terminals made of nickel-plated brass, suitable for leads from 0.5 to 2.5 mm²
- Nominal voltage: 250V
- Nominal current: 2A
- Maximum nominal working temperature: 200°C
- Weight: 50 gr.

Notes

In consideration of its particularly high thermal resistance, this porcelain lampholder can be used also with mains voltage halogen lamps.



ART. 050/B



Portalamпада assemblato con staffa a 90° in ferro zincato (ns. art. 050/16), completa di vite per messa a terra idonea per fili 0,5 ÷ 2,5 mm².
Peso: 55 gr.

Lampholder assembled with 90° galvanized iron clamping plate (our art. 050/16), complete with earth screw. The earth connector terminal is suitable for leads 0,5 ÷ 2,5 mm².
Weight: 55 gr.

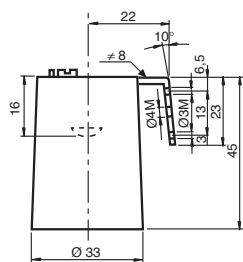


Attacco/Cap

E14

Per lampade ad incandescenza
For incandescent lamps

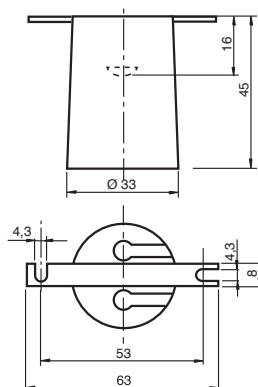
ART. 050/D



Portalampada assemblato con staffa a 100° in ferro zincato (ns. art. 050/18), completa di vite per messa a terra. Vite per messa a terra per fili 0,5 ÷ 2,5 mm².
Peso: 55 gr.

*Lampholder assembled with 100° galvanized iron clamping plate (our art. 050/18), complete with earth screw suitable for leads 0,5 ÷ 2,5 mm².
Weight: 55 gr.*

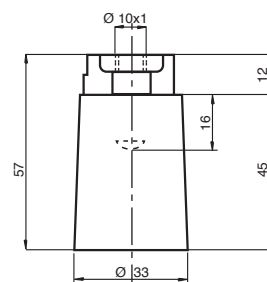
ART. 050/G



Portalampada assemblato con staffa diritta in ferro zincato (ns. art. 050/20).
Peso: 57 gr.

*Lampholder assembled with straight galvanized iron clamping plate (our art. 050/20).
Weight: 57 gr.*

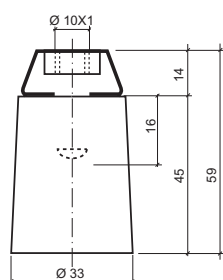
ART. 050/P



Portalampada assemblato con raccordo in alluminio pressofuso (ns. art. 0152). Filetto femmina da 10x1 con vite di bloccaggio Tige. Vite per messa a terra per fili 0,5 ÷ 2,5 mm².
Peso: 58 gr.

*Lampholder assembled with die-cast aluminium jumper connection (our art. 0152). 10x1 female thread with Tige locking screw. Earth screw for leads 0,5 ÷ 2,5 mm².
Weight: 58 gr.*

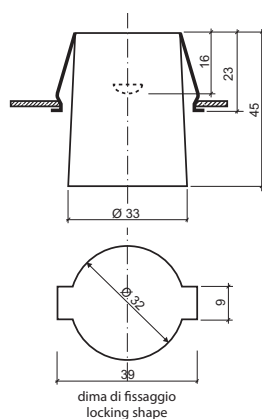
ART. 050/P1



Portalamпада assembled with raccordo in ferro (ns articolo 0155). Filetto femmina da 10X1 con vite di bloccaggio Tige. Vite per messa a terra per fili 0,5 ÷ 2,5 mm².
Peso: 58 gr

*Lampholder assembled with iron jumper connection (our art. 0155). 10x1 female thread with Tige locking screw. Earth screw for leads 0,5 ÷ 2,5 mm².
Weight: 58 gr.*

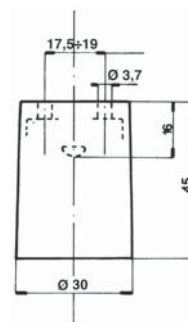
ART. 050/U



Portalamпада assembled with molla per aggancio rapido ad U (ns articolo 050/14), per pareti di spessore 0,5 ÷ 2 mm².
Peso: 55 gr.

*Lampholder assembled with rapid hooking U-spring (our art. 050/14), for walls with thickness from 0,5 ÷ 2 mm².
Weight: 55 gr*

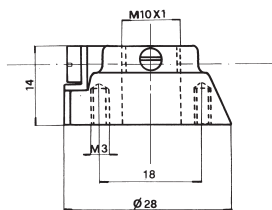
ART. 050.1



Corpo portalamпада in steatite bianca con verniciatura trasparente. Altri dati tecnici come articolo base 050.
Nota
Particolarmente adatto per una soluzione estetica ottimale.

Body made of white steatite with transparent paint. Other technical data as the article 050.
Note
Suitable for particularly aesthetic solutions.

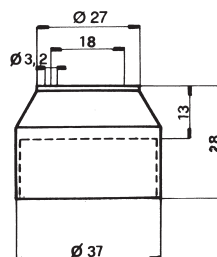
ART. 0154



Raccordo in alluminio pressofuso conico. Filetto femmina da 10x1 con vite di bloccaggio Tige. Vite per messa a terra per fili 0,5 ÷ 2,5 mm².
Peso: 10 gr.

*Conical connection made of die-cast aluminium. 10x1 female thread with Tige locking screw. Earth screw for leads from 0.5 ÷ 2.5 mm².
Weight: 10 gr.*

ART. 0203



Cappuccio in materiale termoplastico per doppio isolamento completo di piastrina per isolamento vite M3.

Art. 0203/A

Su richiesta con filetto femmina da 10x1.
Peso: 11 gr.

Thermoplastic cap for double insulation complet with plate for i M3 nsulation screw.

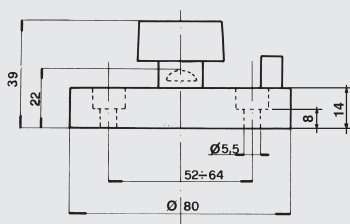
Art. 0203/A

*Available with 10x1 female thread on request
Weight: 11 gr.*

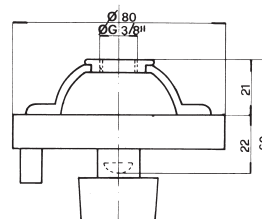
Per lampade ad incandescenza di impianti in serie
For incandescent lamps for systems connected in series

ART. 089

Con dispositivo semplice di chiusura del circuito
With circuit locking device



ART. 089/P



Dati tecnici

- Basetta in porcellana
- Virola in ottone pressofuso nichelato
- Contatti in ottone nichelato
- Molla del contatto centrale in acciaio inox
- Morsetti a bussola in ottone nichelato idonei per fili $1 \div 4 \text{ mm}^2$
- Tensione nominale: 250 / 500 V
- Corrente nominale: 4A
- Peso: 210 gr.

Nota

Portalamпада non protetto, in cui la protezione dai contatti accidentali, così come le distanze in aria e superficiali verso le parti attive, devono essere rispettate in fase di montaggio nell'apparecchio d'illuminazione.

Technical data

- Porcelain base
- Bulb screw base made of die-cast, nickel-plated brass
- Nickel plated brass contacts
- Central contact spring made of stainless steel
- Connector terminals made of nickel-plated brass, suitable for leads $1 \div 4 \text{ mm}^2$
- Nominal voltage: 250 / 500 V
- Nominal current: 4A
- Weight: 210 gr.

Notes

Non-protected lampholder. Protection against involuntary contact, the distance in the air and the superficial distance from active parts must be taken into consideration during the mounting phase into the luminaire.

Portalamпада assemblato con raccordo in alluminio pressofuso (ns. art. 0150). Filetto femmina da 3/8" G con vite di bloccaggio Tige. Peso: 227 gr.

Lampholder assembled with die-cast aluminium jumper connection (our art. 0150). 3/8" G female thread with Tige blocking screw. Weight: 227 gr.

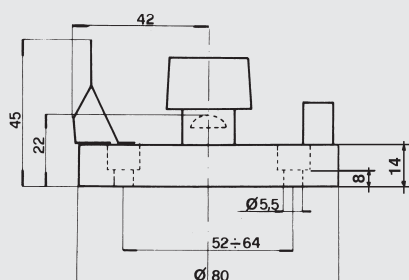
Attacco/Cap

E27

Per lampade ad incandescenza di impianti in serie
For incandescent lamps for systems connected in series

ART. 090

Con dispositivo doppio di chiusura del circuito
With double circuit locking device



Dati tecnici

- Basetta in porcellana
- Virola in ottone pressofuso nichelato
- Contatti in ottone nichelato
- Molla del contatto centrale in acciaio inox
- Morsetti a bussola in ottone nichelato idonei per fili $1 \div 4 \text{ mm}^2$
- Tensione nominale: 250 / 500 V
- Corrente nominale: 4A
- Peso: 214 gr.

Nota

Portalamпада non protetto, in cui la protezione dai contatti accidentali, così come le distanze in aria e superficiali verso le parti attive, devono essere rispettate in fase di montaggio nell'apparecchio d'illuminazione.

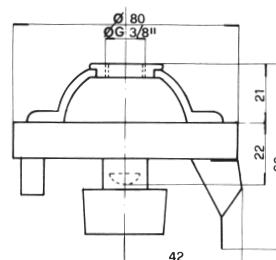
Technical data

- Porcelain base
- Bulb screw base made of die-cast, nickel-plated brass
- Nickel plated brass contacts
- Central contacts spring made of stainless steel
- Connector terminals made of nickel-plated brass, suitable for leads $1 \div 4 \text{ mm}^2$
- Nominal voltage: 250 / 500 V
- Nominal current: 4A
- Weight: 214 gr.

Notes

Non-protected lampholder. Protection against involuntary contact, the distance in the air and the superficial distance from active parts must be taken into consideration during the mounting phase into the luminaire.

ART. 090/P

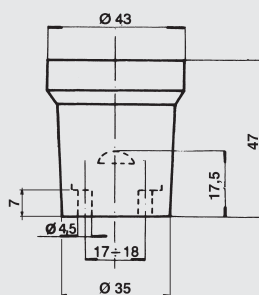


Portalamпада assemblato con raccordo in alluminio pressofuso (ns. art. 0150). Filetto femmina da 3/8" G con vite di bloccaggio Tige. Peso: 231 gr.

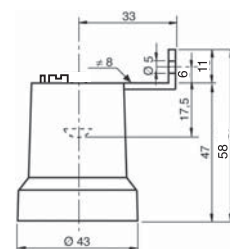
Lampholder assembled with die-cast aluminium jumper connection (our art. 0150). 3/8" G Female thread with Tige blocking screw. Weight: 231 gr.

Per lampade ad incandescenza e scarica
For incandescent and discharge lamps

ART. 0113



ART. 0113/B



Incandescenza
Incandescent

Dati tecnici

- Corpo in porcellana
- Contatti in ottone ramato
- Morsetti a bussola in ottone idonei per fili 0,5 ÷ 2,5 mm²
- Tensione nom.: 250V
- Corrente nom.: 4A
- Temperatura max del portalamпада: 210° C
- Tensione d'impulso max: 5 kV
- Categoria di tenuta all'impulso: II
- Peso: 60 gr.

Nota

Data la particolare resistenza termica del portalamпада in porcellana, esso è indicato anche per l'uso con lampade alogene a tensione di rete.

Technical data

- Porcelain body
- Coppered brass contacts
- Brass connectors terminals suitable for leads 0,5 ÷ 2,5 mm²
- Nominal voltage: 250V
- Nominal current: 4A
- Nominal highest working temperature: 210°C
- Maximum rated pulse voltage: 5 kV
- Impulse withstand category: II
- Weight: 60 gr.

Notes

In consideration of its particularly high thermal resistance, this porcelain lampholder can be used also with mains voltage halogen lamps.

Portalamпада assemblato con staffa a 90° in ferro zincato (ns. art. 050/16), completa di vite per messa a terra idonea per fili 0,5 ÷ 2,5 mm².
Peso: 65 gr.

Lampholder assembled with 90° galvanized iron camping plate (our art. 050/16), complete with earth screw, suitable for leads 0,5 ÷ 2,5 mm².
Weight: 65 gr.

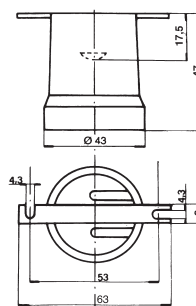
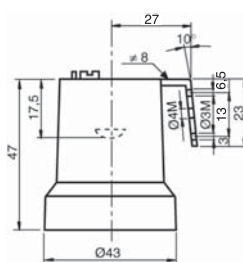
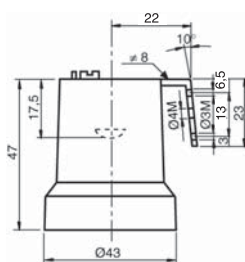
Attacco/Cap
E27

Per lampade ad incandescenza e scarica
For incandescent and discharge lamps

ART. 0113/D

ART. 0113/D1

ART. 0113/G



Portalamпада assemblato con staffa a 100° in ferro zincato, completa di vite per messa a terra idonea per fili 0,5 ÷ 2,5 mm².
 Peso: 65 gr.

Art. 0113/D3

Stesso portalamпада, senza vite di messa a terra.

Lampholder assembled with 100° galvanized iron clamping plate, complete with earth screw, suitable for leads 0,5 ÷ 2,5 mm².

Weight: 65 gr.

Art. 0113/D3

Same lampholder, without earth screw.

Portalamпада assemblato con staffa a 100° in ferro zincato, completa di vite per messa a terra idonea per fili 0,5 ÷ 2,5 mm².
 Peso: 65 gr.

Art. 0113/D3

Lampholder assembled with 100° galvanized iron clamping plate, complete with earth screw, suitable for leads 0,5 ÷ 2,5 mm².

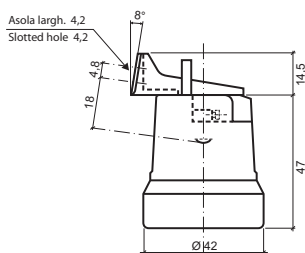
Weight: 65 gr.

Portalamпада assemblato con staffa dritta in ferro zincato (ns. art. 050/20).
 Peso: 67 gr.

Lampholder assembled with straight galvanized iron clamping plate (our art. 050/20).

Weight: 67 gr.

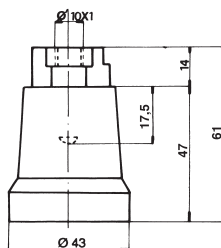
ART. 0113/H



Portalampada assemblato con staffa 98° in termoplastico PET bianco (staffa ns. art. 0113/9).
Peso: 63 gr.

*White PET thermoplastic lampholder assembled with 98° clamping plate (Our art 0113/9).
Weight: 63 gr.*

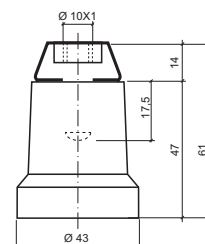
ART. 0113/P



Portalampada assemblato con raccordo in alluminio pressofuso (ns. art. 0152). Filetto femmina da 10x1 con vite di bloccaggio Tige. Vite per messa a terra per fili 0,5 ÷ 2,5 mm².
Peso: 68 gr.

*Lampholder assembled with die-cast aluminium jumper connection (our art. 0152). 10x1 female thread with Tige locking screw for leads 0,5 ÷ 2,5 mm².
Weight: 68 gr.*

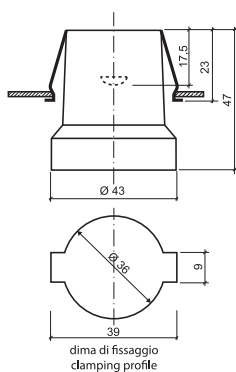
ART. 0113/P1



Portalampada assemblato con raccordo in ferro (ns articolo 0155). Filetto femmina da 10X1 con vite di bloccaggio Tige. Vite per messa a terra per fili 0,5 ÷ 2,5 mm².
Peso: 68 gr.

*Lampholder assembled with iron jumper connection (our art. 0155). 10x1 female thread with Tige locking screw for leads 0,5 ÷ 2,5 mm².
Weight: 68 gr.*

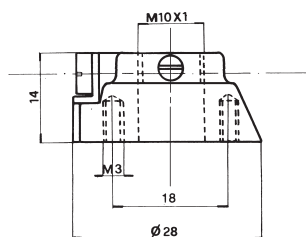
ART. 0113/U



Portalamпада assembled with rapid hooking U-spring (our art. 050/14), for walls with thickness from 0,5 ÷ 2 mm².
Peso: 65 gr.

*Lampholder assembled with rapid hooking U-spring (our art. 050/14), for walls with thickness from 0,5 ÷ 2 mm².
Weight: 65 gr.*

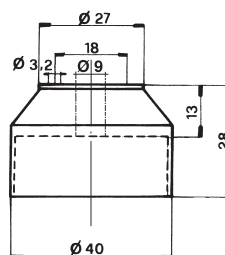
ART. 0154



Raccordo in alluminio pressofuso conico. Filetto femmina da 10x1 con vite di bloccaggio Tige. Vite per messa a terra per fili 0,5 ÷ 2,5 mm².
Peso: 10 gr.

*Conical connection made of die-cast aluminium. 10x1 female thread with Tige locking screw. Earth screw for leads from 0.5 to 2.5 mm²
Weight: 10 gr.*

ART. 0204



Cappuccio in materiale termoplastico per doppio isolamento completo di piastrina per isolamento vite M3.
Art. 0204/A
Su richiesta con filetto femmina da 10x1.
Peso: 12 gr.

*Thermoplastic cap for double insulation, complete with plate for M3 insulation screw.
Art. 0204/A
Available with 10x1 female thread on request.
Weight: 12 gr.*

Attacco/Cap

E40

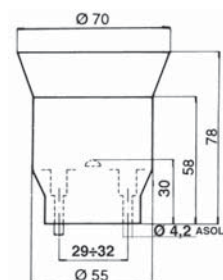


Per lampade a incandescenza e scarica
For incandescent and discharge lamps

ART. 076



ART. 076.1/SA



Incandescenza
Incandescent

Nota

L'articolo base **076** viene realizzato in 2 versioni costruttive prevalenti:

Serie **076.1**

con virola in ottone pressofuso e nichelato.

Serie **076.2**

con virola in lastra di ottone nichelato

Dati tecnici

- Corpo in porcellana
- Contatto centrale in bronzo fosforoso nichelato
- Morsetti a bussola in ottone nichelato per fili $1 \div 4 \text{ mm}^2$
- Corrente nom.: 16A
- Tensione nom.: 500V
- Tensione d'impulso max: 5kV
- Categoria di tenuta all'impulso: III

Notes

Art. **076** is manufactured in two main versions:

Serie **076.1**

with bulb screw base made of die-cast, nickel-plated brass

Serie **076.2**

with bulb screw base made of nickel-plated brass plate

Technical data

- Porcelain body
- Nickel-plated phosphor bronze central contact
- Connector terminals made of nickel-plated brass, suitable for leads from 1 to 4 mm^2
- Nominal values: 16A/500V
- Maximum rated pulse voltage: 5 kV
- Impulse withstand category: III

Versione base con virola in ottone pressofuso nichelato.

Garantisce un ottimo smaltimento della temperatura dello zoccolo lampada.

Peso: 221 gr.

Art. **076.1/SM**

Su richiesta, con molla antisvitamento lampada.

Base version with bulb screw base made of die-cast nickel plated brass.

It guarantees an optimum temperature dissipation

Weight: 221 gr.

Art. **076.1/SM**

On request, assembled with safety catch.



Attacco/Cap

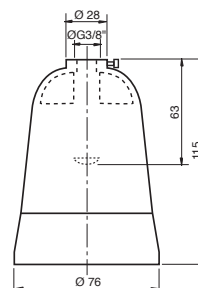
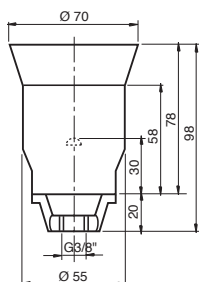
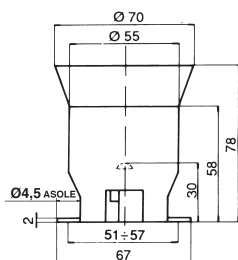
E40

Per lampade a incandescenza e scarica
For incandescent and discharge lamps

ART. 076.1

ART. 076.1/P

ART. 076/22



Come art. 076.1/SA assemblato con staffa diritta in ferro zincato.

Peso: 227 gr.

Art. 076.1/M

Su richiesta, con molla antisvitamento lampada.

As art 076.1/SA, assembled with straight galvanized iron hanger.

Weight: 227 gr.

Art. 076.1/M

On request, assembled with safety catch.

Come art. 076.1/SA assemblato con raccordo in alluminio pressofuso (ns. art. 0151/A). Filetto femmina da 3/8" G

con vite di bloccaggio Tige.

Peso: 236 gr.

As art 076.1/SA, assembled with die-cast aluminium jumper connection (our art. 0151/A). 3/8" G female thread with Tige locking screw.

Weight: 236 gr.

Involucro di protezione in alluminio pressofuso per portalampe ns. art. 076.1/SA. Filetto femmina da 3/8" G

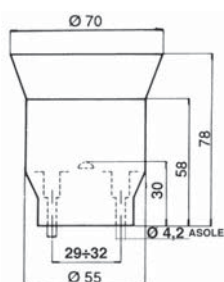
con vite di bloccaggio Tige.

Peso: 190 gr.

Die-cast housing made of aluminium, our lampholder art. 076.1/SA. 3/8" G female thread with Tige blocking screw.

Weight: 190 gr.

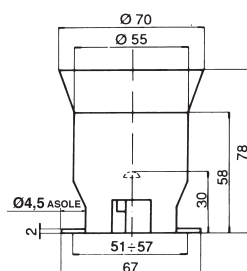
ART. 076.2/SM



Come art. 076.1/SM assemblato con virola in lastra di ottone nichelata e molla antisvitamento lampada.
Peso: 240 gr.

As art. 076.1/SM, assembled with a bulb screw base made of nickel-plated brass and with safety catch.
Weight: 240 gr.

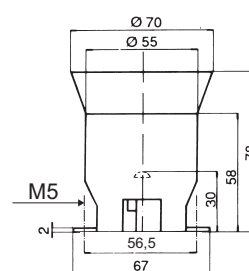
ART. 076.2/M



Come art. 076.1/M assemblato con virola in lastra di ottone nichelata, molla antisvitamento lampada e staffa diritta in ferro zincato.
Peso: 245 gr.

As art. 076.1/M assembled with bulb screw base made of nickel-plated brass plate, safety catch and straight galvanized iron hanger.
Weight: 245 gr.

ART. 076.2/BM



Portalamпада assemblato con virola in lastra in ottone nichelata, molla antisvitamento lampada e staffa diritta in ferro zincato con fori passanti da M5.
Peso: 245 gr.

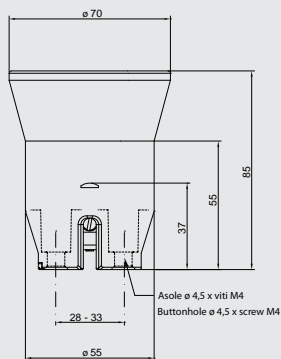
Lampholder assembled with bulb screw base made of nickel-plated brass plate, safety catch and straight galvanized iron hanger with M5 passing hole
Weight: 245 gr.

Attacco/Cap

E40

Per lampade a incandescenza e scarica
For incandescent and discharge lamps

ART. 077/M



Dati tecnici

- Corpo in porcellana
- Virola in lastra di ottone nichelata
- Contatto centrale in bronzo fosforoso nichelato
- Molla antisvitamento lampada in acciaio inox
- Morsetti serrafile a vite e dado idonei per fili $1 \div 4 \text{ mm}^2$
- Corrente nominale: 16A
- Tensione nominale: 500 V
- Tensione d'impulso max: 5kV
- Categoria di tenuta all'impulso: III
- Peso: 235 gr.

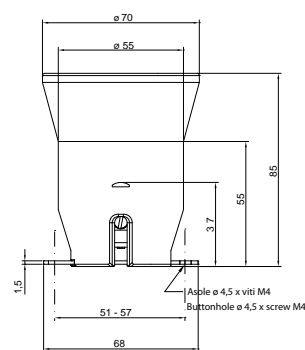
Technical data

- Porcelain body
- Bulb screw base made of nickel-plated brass plate
- Nickel-plated phosphor bronze central contact
- Safety catch made of stainless steel
- Terminal with square nut and screw, suitable for leads from 1 to 4 mm²
- Nominal values: 16A/500V
- Maximum rated pulse voltage: 5KV
- Impulse withstand category: III
- Weight: 235gr

In corso di approvazione presso IMQ

To be approved by IMQ

ART. 077/AM



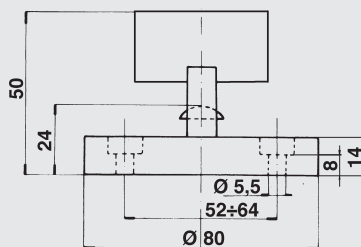
Come art. 077/M assemblato con staffa diritta in ferro zincato e con molla antisvitamento lampada.
Peso: 242 gr.

As art. 077/M, assembled with straight galvanized iron plate and with safety catch.
Weight: 242gr.

Per lampade ad incandescenza di impianti in serie
 For incandescent lamps for systems connected in series

ART. 083

Con dispositivo semplice di chiusura del circuito
 With circuit locking device



Dati tecnici

- Basetta in porcellana
- Virola in ottone pressofuso nichelato
- Contatti in ottone nichelato
- Molla del contatto centrale in acciaio inox
- Morsetti a bussola in ottone nichelato idonei per fili $1 \div 4 \text{ mm}^2$
- Tensione nominale: 250 / 500 V
- Corrente nominale: 16A
- Peso: 240 gr.

Nota

Portalamпада non protetto, in cui la protezione dai contatti accidentali, così come le distanze in aria e superficiali verso le parti attive, devono essere rispettate in fase di montaggio nell'apparecchio d'illuminazione.

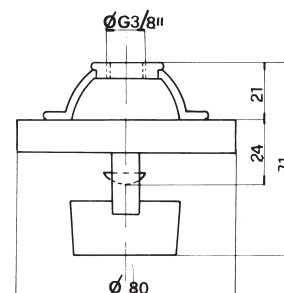
Technical data

- Porcelain base
- Die-cast nickel-plated bulb screw base
- Nickel-plated brass contacts
- Central contact spring made of stainless steel
- Connector terminals made of nickel-plated brass, suitable for leads $1 \div 4 \text{ mm}^2$
- Nominal voltage: 250 / 500 V
- Nominal current: 16A
- Weight: 240 gr.

Notes

Non-protected lampholder. Protection against involuntary contact, the distance in the air and the superficial distance from active parts must be taken into consideration during the mounting phase into the luminaire.

ART. 083/P



Portalamпада assemblato con raccordo in alluminio pressofuso (ns. art. 0150). Filetto femmina da 3/8" G con vite di bloccaggio Tige. Peso: 260 gr.

Lampholder assembled with die-cast aluminium jumper connection (our art. 0150). 3/8" G female thread with Tige blocking screw. Weight: 260 gr.

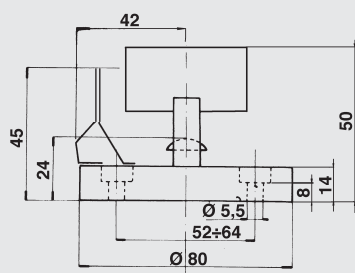
Attacco/Cap

E40

Per lampade ad incandescenza di impianti in serie
For incandescent lamps for systems connected in series

ART. 084

Con dispositivo doppio di chiusura del circuito
With double circuit locking device



Dati tecnici

- Basetta in porcellana
- Virola in ottone pressofuso nichelato
- Contatti in ottone nichelato
- Molla del contatto centrale in acciaio inox
- Morsetti a bussola in ottone nichelato idonei per fili $1 \div 4 \text{ mm}^2$
- Tensione nominale: 250 / 500 V
- Corrente nominale: 16A
- Peso: 250 gr.

Nota

Portalamпада non protetto, in cui la protezione dai contatti accidentali, così come le distanze in aria e superficiali verso le parti attive, devono essere rispettate in fase di montaggio nell'apparecchio d'illuminazione.

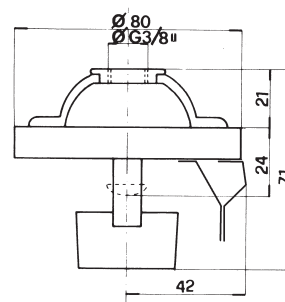
Technical data

- Porcelain base
- Die-cast nickel-plated bulb screw base
- Nickel-plated brass contacts
- Central contact spring made of stainless steel
- Connector terminals made of nickel-plated brass, suitable for leads $1 \div 4 \text{ mm}^2$
- Nominal voltage: 250 / 500 V
- Nominal current: 16A
- Weight: 250

Notes

Non-protected lampholder. Protection against involuntary contact, the distance in the air and the superficial distance from active parts must be taken into consideration during the mounting phase into the luminaire.

ART. 084/P



Portalamпада assemblato con raccordo in alluminio pressofuso (ns. art. 0150). Filetto femmina da 3/8" G con vite di bloccaggio Tige. Peso: 260 gr.

Lampholder assembled with die-cast aluminium jumper connection (our art. 0150). 3/8" G female thread with Tige blocking screw. Weight: 260 gr.

Design by
Telonius Whitehead
2009



OMT S.R.L.
Via Tito Speri 7/E
25040 Nigoline di Cortefranca (BS)
tel. 030984128 - 030984181
fax 030984256
info@omtsrl.com
C.F./P. IVA 00219160173