



CATALOGO PRODOTTI
PRODUCTS CATALOGUE

PORTALAMPADA LAMP HOLDERS

Scarica
Discharge

E27	ART. 0109	04
	ART. 0113	07
E39	ART. 0040	11
	ART. 0076.1	12
E40	ART. 040	14
	ART. 076	16
	ART. 077	19
PGZ12	ART. 014	20
RX7s	ART. 019.2	21
	ART. 056.2	23
G8,5	ART. 028	27
	ART. 029	28
GX8,5	ART. 060	29
GX10	ART. 061	30
G12	ART. 035	31
GX12	ART. 036	32
BY220	ART. 0102	33

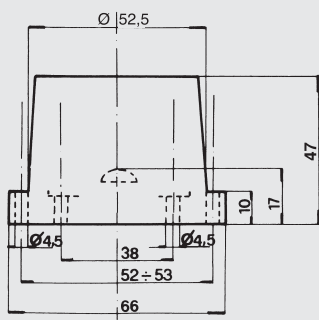
Attacco/Cap

E27

Per lampade a scarica
For discharge lamps

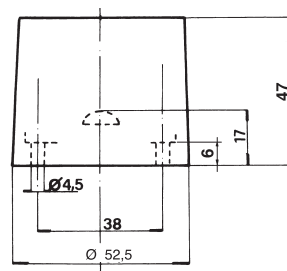
ART. 0109

Con alette esterne ad interasse di fissaggio 52 ÷ 53 mm.
With external vanes with centre distance from 52 ÷ 53 mm.



ART. 0109/SA

Senza alette esterne. Interasse di fissaggio 38 mm.
Without external vanes fixing wheelbase 38 mm.



Dati tecnici

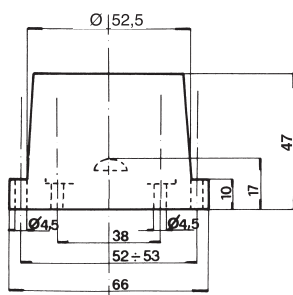
- Corpo in porcellana
- Virola in ottone pressofuso nichelato
- Contatti centrale e laterale in ottone nichelato
- Molla del contatto centrale in acciaio inox
- Morsetti a bussola in ottone nichelato idonei per fili 0,5 ÷ 2,5 mm²
- Tensione nominale: 500 V
- Corrente nominale: 4A
- Tensione d'impulso max: 5 kV
- Temperatura max del portalamпада: 210°C
- Categoria di tenuta all'impulso: III
- Peso: 150 gr.

Technical data

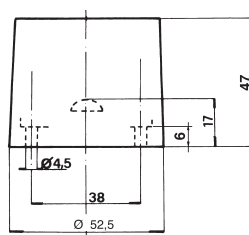
- Porcelain body
- Bulb screw base made of die-cast, nickel-plated brass
- Nickel plated brass central and lateral contact
- Central contact spring made of stainless steel
- Connector terminals made of nickel-plated brass, suitable for leads 0,5 ÷ 2,5 mm²
- Nominal voltage: 500 V
- Nominal current: 4A
- Max rated pulse voltage 5 kV
- Max temperature of lampholder: 210°C
- Impulse withstand category: III
- Weight: 150 gr.



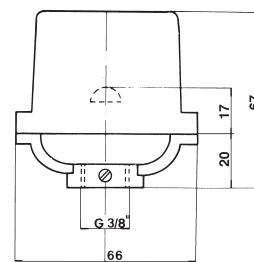
ART. 0109/N



ART. 0109/SN



ART. 0109/P



Come art. 0109 ma con contatti speciali in cupronichel, indicato per atmosfere particolarmente corrosive.

As art 0109, but supplied with special contacts made of copper-nickel, suitable for particullary corrosive atmosphere.

Come art. 0109/SA ma con contatti speciali in cupronichel, indicato per atmosfere particolarmente corrosive.

As art 0109/SA, but supplied with special contacts made of copper-nickel, suitable for particullary corrosive atmosphere.

Portalamphada assemblato con raccordo in alluminio pressofuso (ns. art. 0150). Filetto femmina da 3/8" G con vite di bloccaggio Tige.

Peso: 175 gr.

Art. 0109/P3

Come art. 0109/P ma con raccordo completo di vite per messa a terra idonea per fili 0,5 ÷ 2,5 mm²

Lampholder assembled with die-cast aluminium jumper connection (our art. 0150). 3/8" G female thread with Tige locking screw.

Weight: 175 gr.

Art. 0109/P3

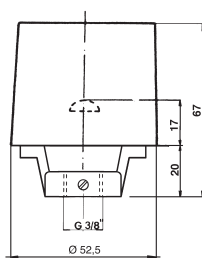
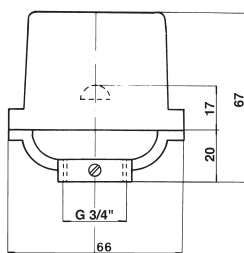
As art. 0109/P, but supplied with jumper connection complete with earth screw for leads 0,5 ÷ 2,5 mm²

Attacco/Cap
E27

Per lampade a scarica
For discharge lamps

ART. 0109/P1

ART. 0109/P2



Portalamпада assembled with raccordo in alluminio pressofuso (ns. art. 0153). Filetto femmina da 3/4" G con vite di bloccaggio Tige.
Peso: 177 gr.

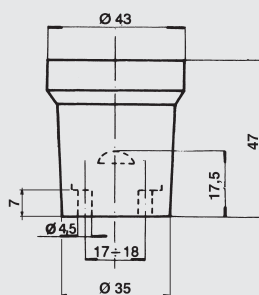
*Lampholder assembled with die-cast aluminium jumper connection (our art. 0153). 3/4" G female thread da with Tige locking screw.
Weight: 177 gr.*

Portalamпада senza alette assembled with raccordo in alluminio pressofuso (ns. art. 0151). Filetto femmina da 3/8" G con vite di bloccaggio Tige.
Peso: 165 gr.

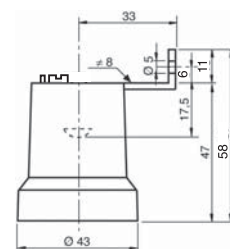
*Lampholder assembled with die-cast aluminium jumper connection (our art. 0151). 3/8" G female thread with Tige locking screw.
Weight: 165 gr.*

Per lampade ad incandescenza e scarica
For incandescent and discharge lamps

ART. 0113



ART. 0113/B



Dati tecnici

- Corpo in porcellana
- Contatti in ottone ramato
- Morsetti a bussola in ottone idonei per fili 0,5 ÷ 2,5 mm²
- Tensione nom.: 250V
- Corrente nom.: 4A
- Temperatura max del portalamпада: 210° C
- Tensione d'impulso max: 5 kV
- Categoria di tenuta all'impulso: II
- Peso: 60 gr.

Nota

Data la particolare resistenza termica del portalamпада in porcellana, esso è indicato anche per l'uso con lampade alogene a tensione di rete.

Technical data

- Porcelain body
- Coppered brass contacts
- Brass connectors terminals suitable for leads 0,5 ÷ 2,5 mm²
- Nominal voltage: 250V
- Nominal current: 4A
- Nominal highest working temperature: 210°C
- Maximum rated pulse voltage: 5 kV
- Impulse withstand category: II
- Weight: 60 gr.

Notes

In consideration of its particularly high thermal resistance, this porcelain lampholder can be used also with mains voltage halogen lamps.

Portalamпада assemblato con staffa a 90° in ferro zincato (ns. art. 050/16), completa di vite per messa a terra idonea per fili 0,5 ÷ 2,5 mm².
Peso: 65 gr.

Lampholder assembled with 90° galvanized iron camping plate (our art. 050/16), complete with earth screw, suitable for leads 0,5 ÷ 2,5 mm².
Weight: 65 gr.

Attacco/Cap

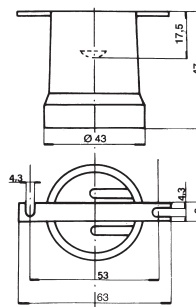
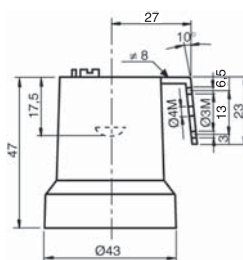
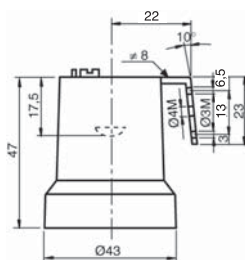
E27

Per lampade ad incandescenza e scarica
For incandescent and discharge lamps

ART. 0113/D

ART. 0113/D1

ART. 0113/G



Portalamпада assemblato con staffa a 100° in ferro zincato, completa di vite per messa a terra idonea per fili 0,5 ÷ 2,5 mm².
Peso: 65 gr.

Art. 0113/D3

Stesso portalamпада, senza vite di messa a terra.

*Lampholder assembled with 100° galvanized iron clamping plate, complet with earth screw, suitable for leads 0,5 ÷ 2,5 mm².
Weight: 65 gr.*

Art. 0113/D3

The same lampholder, without earth screw.

Portalamпада assemblato con staffa a 100° in ferro zincato, completa di vite per messa a terra idonea per fili 0,5 ÷ 2,5 mm².
Peso: 65 gr.

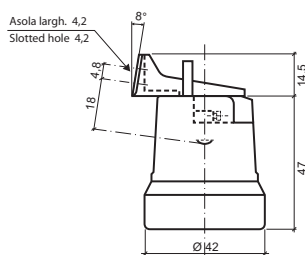
Art. 0113/D3

*Lampholder assembled with 100° galvanized iron clamping plate, complet with earth screw, suitable for leads 0,5 ÷ 2,5 mm².
Weight: 65 gr.*

Portalamпада assemblato con staffa diritta in ferro zincato (ns. art. 050/20).
Peso: 67 gr.

*Lampholder assembled with straight galvanized iron clamping plate (our art. 050/20).
Weight: 67 gr.*

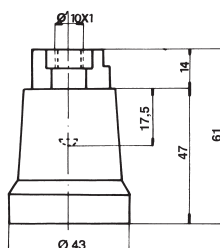
ART. 0113/H



Portalamпада assemblato con staffa 98° in termoplastico PET bianco (staffa ns. art. 0113/9).
Peso: 63 gr.

*White PET thermoplastic lampholder assembled with 98° clamping plate (our art 0113/9).
Weight: 63 gr.*

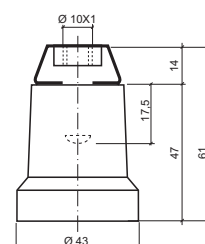
ART. 0113/P



Portalamпада assemblato con raccordo in alluminio pressofuso (ns. art. 0152). Filetto femmina da 10x1 con vite di bloccaggio Tige. Vite per messa a terra per fili 0,5 ÷ 2,5 mm².
Peso: 68 gr.

*Lampholder assembled with die-cast aluminium jumper connection (our art. 0152). 10x1 female thread with Tige locking screw for leads 0,5 ÷ 2,5 mm².
Weight: 68 gr.*

ART. 0113/P1



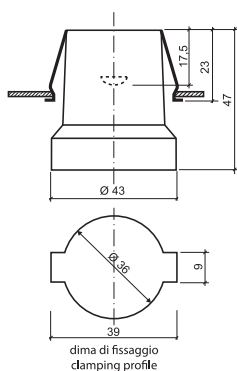
Portalamпада assemblato con raccordo in ferro (ns articolo 0155). Filetto femmina da 10X1 con vite di bloccaggio Tige. Vite per messa a terra per fili 0,5 ÷ 2,5 mm².
Peso: 68 gr.

*Lampholder assembled with iron jumper connection (our art. 0155). 10x1 female thread with Tige locking screw for leads 0,5 ÷ 2,5 mm².
Weight: 68 gr.*

Attacco/Cap
E27

Per lampade ad incandescenza e scarica
For incandescent and discharge lamps

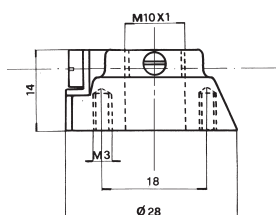
ART. 0113/U



Portalamпада assemblato con molla per aggancio rapido ad U (ns articolo 050/14), per pareti di spessore $0,5 \div 2 \text{ mm}^2$.
 Peso: 65 gr.

*Lampholder assembled with rapid hooking U-spring (our art. 050/14), for walls with thickness from $0,5 \div 2 \text{ mm}^2$.
 Weight: 65 gr.*

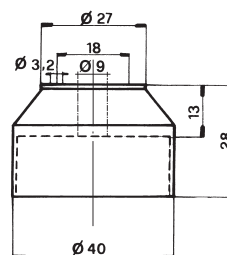
ART. 0154



Raccordo in alluminio pressofuso conico. Filetto femmina da 10x1 con vite di bloccaggio Tige. Vite per messa a terra per fili $0,5 \div 2,5 \text{ mm}^2$.
 Peso: 10 gr.

*Conical connection made of die-cast aluminium. 10x1 female thread with Tige locking screw. Earth screw suitable for leads from $0.5 \text{ to } 2.5 \text{ mm}^2$.
 Weight: 10 gr.*

ART. 0204



Cappuccio in materiale termoplastico per doppio isolamento completo di piastrina per isolamento vite M3.
Art. 0204/A
 Su richiesta con filetto femmina da 10x1.
 Peso: 12 gr.

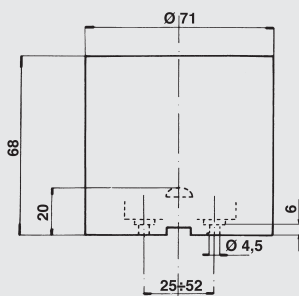
*Thermoplastic cap for double insulation, complete with plate for M3 insulation screw.
Art. 0204/A
 Available with 10x1 female thread on request.
 Weight: 12 gr.*

Attacco/Cap



Per lampade a scarica
For discharge lamps

ART. 0040



Dati tecnici

- Corpo in porcellana
- Virola in ottone pressofuso nichelato
- Contatto centrale in ottone nichelato
- Molla del contatto centrale in acciaio inox
- Morsetti a bussola in ottone nichelato idonei per fili $1 \div 4 \text{ mm}^2$
- Potenza nom.: 1500W
- Tensione nom.: 600V
- Tensione d'impulso max: 5 kV
- Peso: 336 gr.

Technical data

- Porcelain body
- Bulb screw base made of die-cast, nickel-plated brass
- Central and lateral contact made of nickel-plated brass
- Central contact spring made of stainless steel
- Nickel plated connectors terminals suitable for leads $1 \div 4 \text{ mm}^2$
- Nominal values: 1500W / 600 V
- Max rated pulse voltage: 5 kV
- Weight: 336 gr.

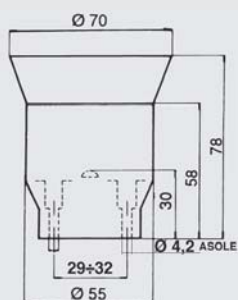


Attacco/Cap

EE39

Per lampade a incandescenza e scarica
For incandescent and discharge lamps

ART. 0076.1/SA



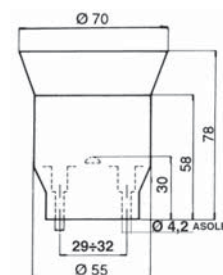
Dati tecnici

- Corpo in porcellana
- Virola in ottone pressofuso nichelato
- Contatto centrale in bronzo fosforoso nichelato
- Morsetti a bussola in ottone nichelato idonei per fili $1 \div 4 \text{ mm}^2$
- Potenza nominale: 1500W
- Tensione nominale: 600V
- Tensione d'impulso max: 4kV
- Peso: 221 gr.

Technical data

- Porcelain body
- Bulb screw base made of die-cast, nickel-plated brass
- Central contact made of nickel-plated phosphor bronze
- Connector terminals made of nickel-plated brass, suitable for leads $1 \div 4 \text{ mm}^2$
- Nominal values: 1500W / 600W
- Rated pulse voltage max: 4kV
- Weight: 221 gr.

ART. 0076.1/SM

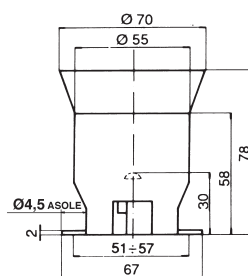
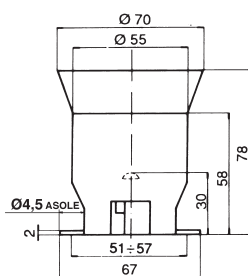


Come art. 0076.1/SA con molla antisvitamento lampada.
Peso: 221 gr.

As art 0076.1/SA, with safety catch.
Weight: 221 gr.

ART. 0076.1

ART. 0076.1/M



Come art. 0076.1/SA assemblato con staffa diritta in ferro zincato.
Peso: 227 gr.

*As art 0076.1/SA, assembled with straight galvanized iron hanger.
Weight: 227 gr.*

Come art. 0076.1/SA assemblato con staffa diritta in ferro zincato e con molla antisvitamento lampada.
Peso: 227 gr.

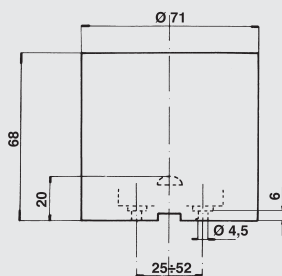
*As art 0076.1/SA, assembled with straight galvanized iron hanger and with safety catch.
Weight: 227 gr.*

Attacco/Cap

E40

Per lampade a scarica
For discharge lamps

ART. 040



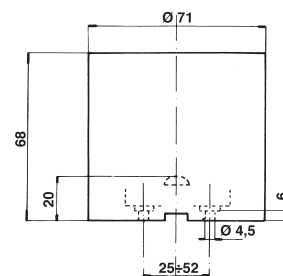
Dati tecnici

- Corpo in porcellana
- Virola in ottone pressofuso nichelato
- Contatto centrale in ottone nichelato
- Molla del contatto centrale in acciaio inox
- Morsetti a bussola in ottone nichelato idonei per fili $1 \div 4 \text{ mm}^2$
- Tensione d'impulso max: 5 kV
- Corrente nom.: 16A
- Tensione nom.: 500V
- Categoria di tenuta all'impulso: III
- Peso: 336 gr.

Technical data

- Porcelain body
- Bulb screw base made of die-cast, nickel-plated brass
- Central and lateral contact made of nickel-plated brass
- Central contact spring made of stainless steel
- Nickel plated connector terminals suitable for leads $1 \div 4 \text{ mm}^2$
- Nominal values: 16A / 500 V
- Max rated pulse voltage: 5 kV
- Impulse withstand category: III
- Weight: 336 gr.

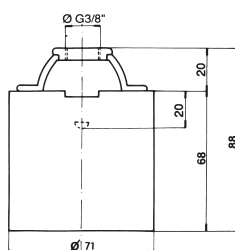
ART. 040/N



Come art 040 ma con contatto centrale in cupronichel, indicato per atmosfere particolarmente corrosive.

As art 040, but with special contacts made of copper-nickel, suitable for particularly corrosive atmosphere.

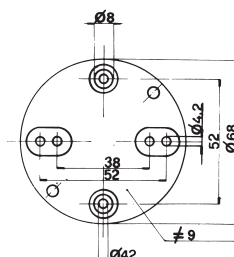
ART. 040/P



Portalamпада assembled with raccordo in alluminio pressofuso (ns. art. 0150). Filetto femmina da 3/8" G con vite di bloccaggio Tige.
Peso: 356 gr.

*Lampholder assembled with die-cast aluminium jumper connection (our art. 0150). 3/8" G female thread with Tige blocking screw.
Weight: 356 gr.*

ART. 0200



Piastrina in materiale termoplastico idonea per il doppio isolamento di portalamпада con interassi di fissaggio da 52 e 38 mm.
Peso: 29 gr.

*Thermoplastic plate suitable for double insulation of lampholders with a clamping distance of 52 and 38 mm.
Weight: 29 gr.*

Attacco/Cap

E40

Per lampade a incandescenza e scarica
For incandescent and discharge lamps

ART. 076



Nota

L'articolo base **076** viene realizzato in 2 versioni costruttive prevalenti:

Serie **076.1**

con virola in ottone pressofuso e nichelato.

Serie **076.2**

con virola in lastra di ottone nichelato

Dati tecnici

- Corpo in porcellana
- Contatto centrale in bronzo fosforoso nichelato
- Morsetti a bussola in ottone nichelato per fili 1 ÷ 4 mm²
- Corrente nom.: 16A
- Tensione nom.: 500V
- Tensione d'impulso max: 5kV
- Categoria di tenuta all'impulso: III

Notes

Art. **076** is manufactured in two main versions:

Serie **076.1**

with bulb screw base made of die-cast, nickel-plated brass

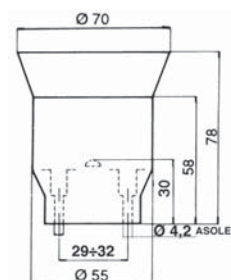
Serie **076.2**

with bulb screw base made of nickel-plated brass plate

Technical data

- Porcelain body
- Nickel-plated phosphor bronze central contact
- Connector terminals made of nickel-plated brass, suitable for leads from 1 to 4 mm²
- Nominal values: 16A/500V
- Maximum rated pulse voltage: 5 kV
- Impulse withstand category: III

ART. 076.1/SA



Versione base con virola in ottone pressofuso nichelato. Garantisce un ottimo smaltimento della temperatura dello zoccolo lampada.

Peso: 221 gr.

Art. **076.1/SM**

Su richiesta, con molla antisvitamento lampada.

Base version with bulb screw base made of die-cast nickel plated brass.

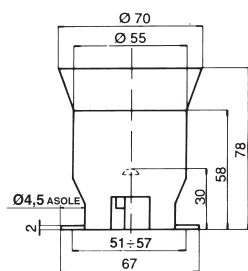
It guarantees an optimum temperature dissipation

Weight: 221 gr.

Art. **076.1/SM**

On request, assembled with safety catch.

ART. 076.1



Come art. 076.1/SA assemblato con staffa diritta in ferro zincato.

Peso: 227 gr.

Art. 076.1/M

Su richiesta, con molla antisvitamento lampada.

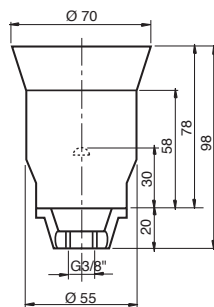
As art 076.1/SA, assembled with straight galvanized iron hanger.

Weight: 227 gr.

Art. 076.1/M

On request, assembled with safety catch.

ART. 076.1/P



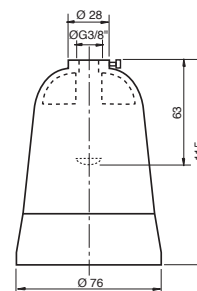
Come art. 076.1/SA assemblato con raccordo in alluminio pressofuso (ns. art. 0151/A). Filetto femmina da 3/8" G con vite di bloccaggio Tige.

Peso: 236 gr.

As art 076.1/SA, assembled with die-cast aluminium jumper connection (our art. 0151/A). 3/8" G female thread with Tige locking screw.

Weight: 236 gr.

ART. 076/22



Involucro di protezione in alluminio pressofuso per portalampana ns. art. 076.1/SA. Filetto femmina da 3/8" G con vite di bloccaggio Tige.

Peso: 190 gr.

Die-cast housing made of aluminium, our lampholder art. 076.1/SA. 3/8" G female thread with Tige blocking screw.

Weight: 190 gr.

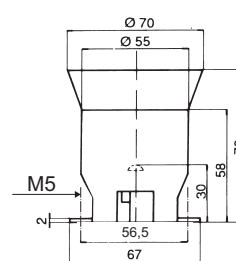
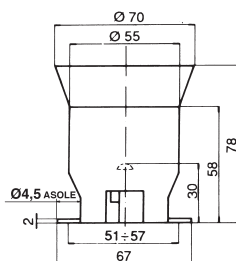
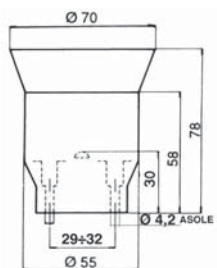
Attacco/Cap
E40

Per lampade a incandescenza e scarica
For incandescent and discharge lamps

ART. 076.2/SM

ART. 076.2/M

ART. 076.2/BM



Come art. 076.1/SM assemblato con virola in lastra di ottone nichelata e molla antisvitamento lampada.
 Peso: 240 gr.

As art. 076.1/SM, assembled with a bulb screw base made of nickel-plated brass and with safety catch.
 Weight: 240 gr.

Come art. 076.1/M assemblato con virola in lastra di ottone nichelata, molla antisvitamento lampada e staffa diritta in ferro zincato.
 Peso: 245 gr.

As art. 076.1/M assembled with bulb screw base made of nickel-plated brass plate, safety catch and straight galvanized iron hanger.
 Weight: 245 gr.

Portalamпада assemblato con virola in lastra in ottone nichelata, molla antisvitamento lampada e staffa diritta in ferro zincato con fori passanti da M5.
 Peso: 245 gr.

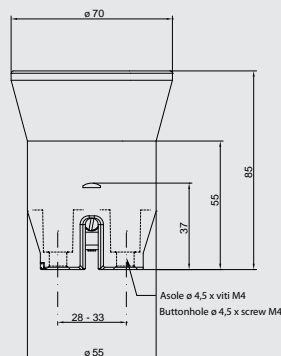
Lampholder assembled with bulb screw base made of nickel-plated brass plate, safety catch and straight galvanized iron hanger with M5 passing hole.
 Weight: 245 gr.

Attacco/Cap

E40

Per lampade a incandescenza e scarica
For incandescent and discharge lamps

ART. 077/M



Dati tecnici

- Corpo in porcellana
- Virola in lastra di ottone nichelata
- Contatto in bronzo fosforoso nichelato
- Molla antisvitamento lampada in acciaio inox
- Morsetti serratilo a vite e dado idonei per fili 1 ÷ 4 mm²
- Corrente nominale: 16A
- Tensione nominale: 500 V
- Tensione d'impulso max: 5kW
- Categoria di tenuta all'impulso: III
- Peso: 235 gr.

In corso di approvazione presso IMQ

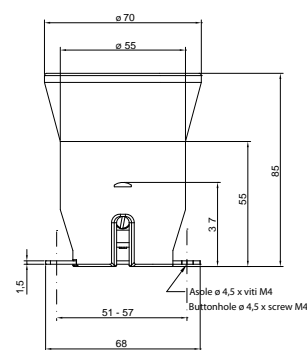
Technical data

- Porcelain body
- Bulb screw base made of nickel-plated brass plate
- Nickel-plated phosphor bronze central contact
- Safety catch made of stainless steel
- Terminal with square nut and screw, suitable for leads from 1 to 4 mm²
- Nominal values: 16A/500V
- Maximum rated pulse voltage: 5KV
- Impulse withstand category: III
- Weight: 235gr

To be approved by IMQ



ART. 077/AM



Come art. 077/M assemblato con staffa diritta in ferro zincato e con molla antisvitamento lampada.
Peso: 242 gr.

As art. 077/M, assembled with straight galvanized iron plate and with safety catch.
Weight: 242gr.

Scarica
Discharge

Attacco/Cap

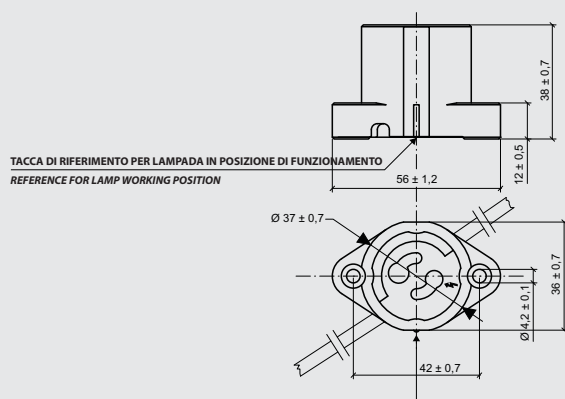
PGZ12

Per lampade a scarica di gas _ specifico per COSMOPOLIS® PHILIPS®
For discharge lamps _ suitable for COSMOPOLIS® PHILIPS®

ART. 014/XX

/XX Lunghezza dei cavi in cm da stabilire in fase di ordine

/XX Length of the leads in centimetres to be defined to be agreed upon with the customer



Dati tecnici

- Corpo in steatite
- Contatti in nichel
- Molle premicontatti in acciaio inox
- Viti di ssaggio M4
- Cavo di collegamento standard: conduttore in rame nichelato, isolamento in gomma siliconica rinforzata (T. max 180°C), lung. : cm. 30, sez. 0,75 mm².
Altri tipi di cavo su richiesta
- Tensione nominale: **250V**
- Tensione max d'impulso: 5 kV
- Corrente nominale: 4 A
- Temperatura max del portalamпада: 300°C
- Categoria di tenuta all'impulso: III
- Peso: 75 gr.

Nota

Il portalamпада è idoneo per l'impiego in apparecchi di Classe II se equipaggiato con cavi in doppio isolamento. In questo caso è necessario salvaguardare le distanze superficiali e le distanze in aria minime previste EN60598-1, tra la parte metallica del collo lampada ed eventuali parti metalliche accessibili dall'apparecchio.

Technical data

- Steatite body
- Nickel contacts
- Contact pressing spring made of stainless steel
- Clamping screw M4
- Standard connection cable: silicone rubber insulation (max T. 180°C). Length: 30 cm, section 0,75 mm².
Other leads available on request.
- Nominal voltage: **250V**
- Maximum rated pulse voltage: 5 kV
- Current voltage: 4A
- Max nominal working temperature: 300°C
- Impulse withstand category: III
- Weight: 75 gr.

Notes

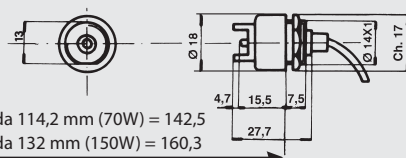
Lampholder suitable for Class II luminaires if assembled with double insulation leads. In this case it is necessary to observe the minimum surface and space distance provided for by the EN60598-1-Standard, between the metal part of the lamp neck and any other metal parts accessible from the appliance.

Per lampade a scarica di gas
For gas discharge lamps

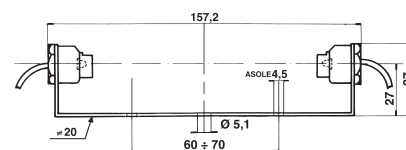
ART. 019.2/XX

/XX Lunghezza dei cavi in cm da stabilire in fase di ordine
/XX Length of the leads in centimetres to be defined to be agreed upon with the customer

ART. 019.20/XX



per lampade da 114,2 mm (70W) = 142,5
per lampade da 132 mm (150W) = 160,3



Distanza di montaggio

Deve essere rispettata scrupolosamente la distanza indicata. I singoli portalampada devono essere supportati rigidamente per non compromettere la spinta esercitata dalle molle sui contatti.

Dati tecnici

- Corpo portalampade in ottone nichelato
- Boccola portacontatto in steatite
- Molla in acciaio inox
- Dado di fissaggio e rondella a corredo
- Cavo di collegamento standard: conduttore in rame nichelato, isolamento in gomma silconica rinforzata (T max 180°C). Tensione d'impulso max 5 kV, lung. cm. 25, sez. 0,75 mm². Altri tipi di cavo su richiesta
- Tensione nominale: 500 V
- Corrente nominale: 4A
- Temperatura max del portalampada: 300°C
- Tensione d'impulso max: 5kV
- Categoria di tenuta all'impulso: III
- Peso: 40 gr./coppia

Assembling distance

The distance indicated must be strictly observed. Each individual lampholder must be firmly supported in order to guarantee that the springs exert the required pressure on the contacts.

Technical data

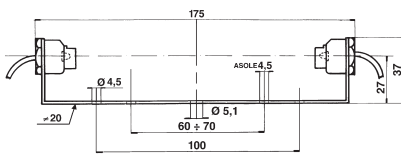
- Nickel-plated brass body
- Contact holder brushing made of steatite
- Stainless steel spring
- Clamping nut and washer on request
- Standard connection lead: nickel-plated copper conductor, reinforced silicone rubber insulation (max T 180°C); impulse voltage with a maximum peak value of 5 kV; Length 25 cm, section 0,75 mm². Other types of leads are available on request
- Nominal voltage: 500 V
- Nominal current: 4A
- Max nominal working temperature: 300°C
- Max rated pulse voltage: 5 kV
- Impulse withstand category: III
- Weight: 40 gr./pair

Portalampada completo di staffa distanziale in ferro zincato (ns. art. 0184) per lampade ioduri metallici da 70W lunghezza nominale 114,2 mm. Peso: 85 gr.

Lampholder complete with galvanized iron hanger (our art. 0184) for 70W metallic iodide lamps with nominal length 114,2 mm Weight: 85 gr.



ART. 019.2E/XX



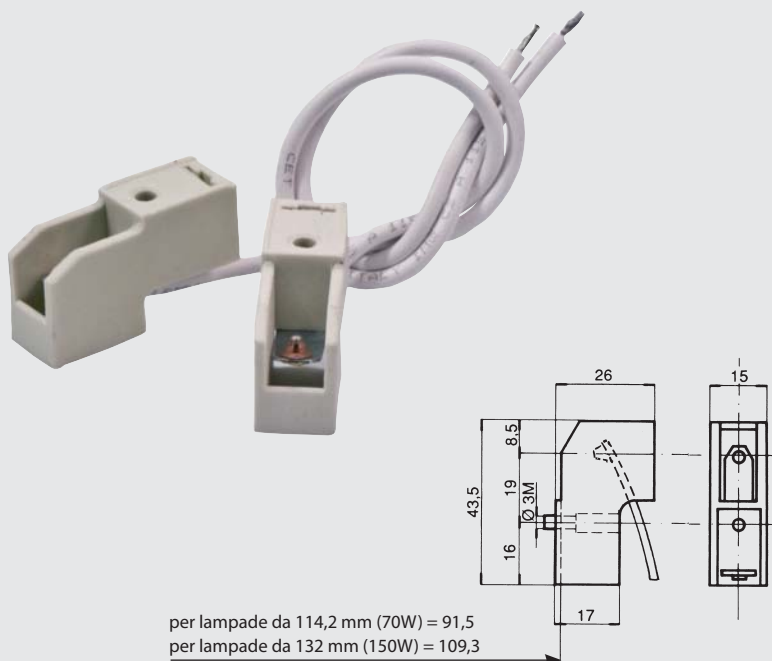
Portalamпада completo di staffa
distanziale in ferro zincato (ns. art. 0185)
per lampade ioduri metallici da 150W
lunghezza nominale 132 mm.
Peso: 90 gr.

*Lampholder complete with galvanized
iron hanger (our art. 0185) for 150W
metallic iodide lamps with nominal length
132 mm
Weight: 90 gr.*

Per lampade a scarica di gas
For gaseous discharge lamps

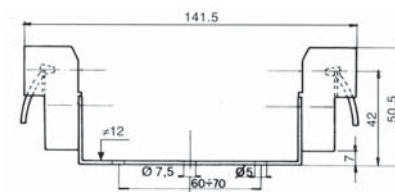
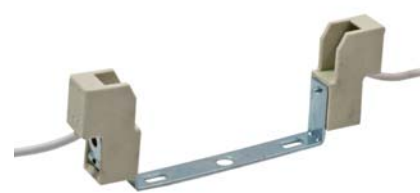
ART. 056.2/XX

/XX lunghezza dei cavi in cm da stabilire in fase di ordine
/XX Length of the leads in centimetres to be defined to be agreed upon with the customer



per lampade da 114,2 mm (70W) = 91,5
per lampade da 132 mm (150W) = 109,3

ART. 056.2B/XX



Scarica
Discharge

Distanza di montaggio

Deve essere rispettata scrupolosamente la distanza indicata. I singoli portalampada devono essere supportati rigidamente per non compromettere la spinta esercitata dalle molle sui contatti.

Dati tecnici

- Corpo in materiale ceramico
- Molla di pressione in acciaio temperato
- Vite di fissaggio M3 (su richiesta è fornibile con vite M4)
- Cavo di collegamento standard: conduttore in rame nichelato, isolamento in gomma silconica rinforzata (T max 180°C), tensione d'impulso max 5 kV, lung. cm. 25, sez. 0,75 mm². Altri tipi di cavo su richiesta
- Tensione nominale: 500 V
- Corrente nominale: 4A
- Temperatura max del portalampada: 300°C
- Tensione d'impulso max: 5kV
- Categoria di tenuta all'impulso: III
- Peso: 56 gr./coppia

Assembling distance

The distance indicated must be strictly observed. Each individual lampholder must be firmly supported in order to guarantee that the springs exert the required pressure on the contacts.

Technical data

- Body made of ceramics
- Hardened steel pressure spring
- M3 clamping screw (M4 screw available on request)
- Standard connection cable: nickel-plated copper conductor, reinforced silicone rubber insulation (max T 180°C); impulse voltage with a maximum peak value of 5 kV; Length 25 cm, section 0,75 mm². Other types of leads are available on request
- Nominal voltage: 500 V
- Nominal current: 4A
- Max nominal working temperature: 300°C
- Max rated pulse voltage: 5 kV
- Impulse withstand category: III
- Weight: 56 gr./pair

Portallampada completo di staffa distanziale in ferro zincato (ns. art. 0164), per lampade ioduri metallici da 70W lunghezza nominale 114,2 mm. Peso: 70 gr.

Lampholder complete with galvanized iron hanger (our art. 0164) for 70W metallic iodide lamps with nominal length 114,2 mm Weight: 70 gr.

Attacco/Cap

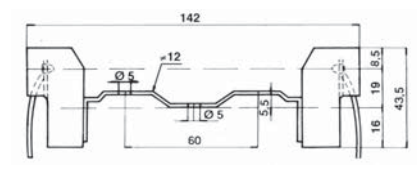
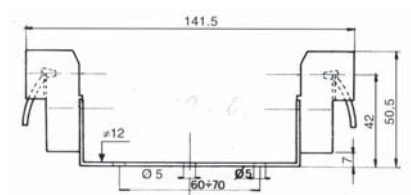
AK75

Per lampade a scarica di gas
For gaseous discharge lamps

ART. 056.2I/XX

ART. 056.2C/XX

ART. 056.2D/XX



Portalamпада completo di staffa
distanziale in ferro zincato (ns. art.
0164/A), per lampade ioduri metallici da
70W lunghezza nominale 114,2 mm.
Peso: 70 gr.

*Lampholder complete with galvanized
iron hanger (our art. 0164/A) for 70W
metallic iodide lamps with nominal
length 114,2 mm
Weight: 70 gr.*

Portalamпада completo di staffa
distanziale in ferro zincato (ns. art. 0166),
per lampade ioduri metallici da 70W
lunghezza nominale 114,2 mm.
Peso: 70 gr.

*Lampholder complete with galvanized
iron hanger (our art. 0166) for 70W
metallic iodide lamps with nominal
length 114,2 mm
Weight: 70 gr.*

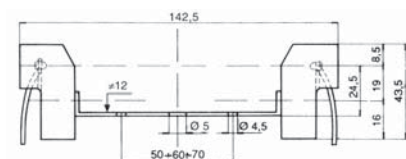
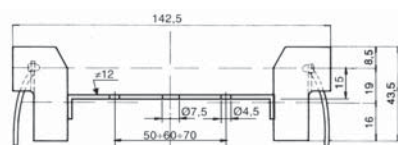
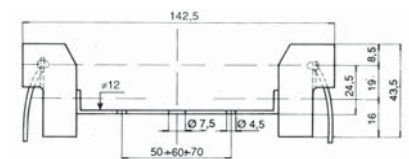
Portalamпада completo di staffa
distanziale in ferro zincato (ns. art. 0169),
per lampade ioduri metallici da 70W
lunghezza nominale 114,2 mm.
Peso: 70 gr.

*Lampholder complete with galvanized
iron hanger (our art. 0169) for 70W
metallic iodide lamps with nominal
length 114,2 mm
Weight: 70 gr.*

ART. 056.2E/XX

ART. 056.2EA/XX

ART. 056.2L/XX



Portalamпада completo di staffa distanziale in ferro zincato (ns. art. 0161), per lampade ioduri metallici da 70W lunghezza nominale 114,2 mm. Peso: 65 gr.

Lampholder complete with galvanized iron hanger (our art. 0161) for 70W metallic iodide lamps with nominal length 114,2 mm
Weight: 65 gr.

Portalamпада completo di staffa distanziale rovesciata in ferro zincato (ns. art. 0161), per lampade ioduri metallici da 70W lunghezza nominale 114,2 mm. Peso: 65 gr.

Lampholder complete with reverse galvanized iron hanger (our art. 0161) for 70W metallic iodide lamps with nominal length 114,2 mm
Weight: 65 gr.

Portalamпада completo di staffa distanziale in ferro zincato (ns. art. 0161/A), per lampade ioduri metallici da 70W lunghezza nominale 114,2 mm. Peso: 65 gr.

Lampholder complete with galvanized iron hanger (our art. 0161/A) for 70W metallic iodide lamps with nominal length 114,2 mm
Weight: 65 gr.

Attacco/Cap

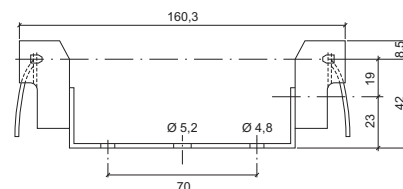
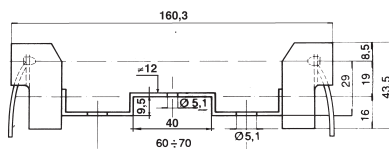
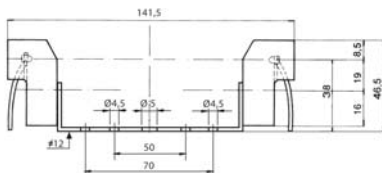
AK75

Per lampade a scarica di gas
For gaseous discharge lamps

ART. 056.24/XX

ART. 056.26/XX

ART. 056.27/XX



Portalampada completo di staffa
distanziale in ferro zincato (ns. art.
0165), per lampade ioduri metallici da
70W lunghezza nominale 114,2 mm.
Peso: 68 gr.

*Lampholder complete with galvanized
iron hanger (our art. 0165) for 70W
metallic iodide lamps with nominal
length 114,2 mm
Weight: 68 gr.*

Portalampada completo di staffa
distanziale in ferro zincato (ns. art.
0167), per lampade ioduri metallici da
150W lunghezza nominale 132 mm.
Peso: 78 gr.

*Lampholder complete with galvanized
iron hanger (our art. 0167) for 150W
metallic iodide lamps with nominal
length 132 mm
Weight: 78 gr.*

Portalampada completo di staffa
distanziale in ferro zincato (ns. art.
0168), per lampade ioduri metallici da
150W lunghezza nominale 132 mm.

*Lampholder complete with galvanized
iron hanger (our art. 0168) for 150W
metallic iodide lamps with nominal
length 132 mm.*

Attacco/Cap

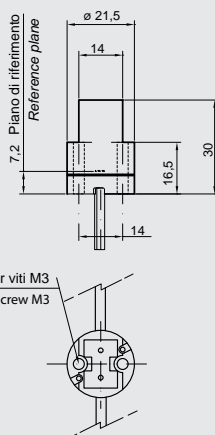
GE,5



Per lampade a scarica di gas
For gaseous discharge lamps

ART. 028/XX

/XX lunghezza dei cavi in cm da stabilire in fase di ordine
/xx: is the cable length in cm to be defined before the order



Dati tecnici

- Corpo e coperchio in steatite
- Contatti in Cu Ni Zn
- Molle premicontatti in acciaio inox
- Fissaggio corpo con viti M3
- Cavo di collegamento standard: conduttore in rame nichelato, isolamento in gomma siliconica rinforzata (T max 180°C), lunghezza 25 cm, sezione 0,75 mm².

Altri tipi di cavo su richiesta.

- Tensione nominale: 750V
- Tensione max d'impulso: 5KV
- Corrente nominale: 2A
- Temp Max del portalamпада: 250°C
- Categoria di tenuta all'impulso: III
- Peso: 25 gr.

Nota

Il portalamпада è idoneo per l'impiego in apparecchi di Classe II, se equipaggiato con cavi in doppio isolamento.

Technical data

- Steatite body and cover
- Contacts made of Cu Ni Zn
- Contact pressing springs made of stainless steel
- Clamping screw M3
- Standard connection lead: nickel-plated copper conductor, reinforced silicone rubber insulation (max T 180°C), length 25 cm, section 0,75 mm².

Other types of leads are available on request.

- Nominal voltage: 750V
- Max rated pulse voltage: 5KV
- Nominal current: 2A
- Max working temperature: 250°C
- Impulse withstand category: III
- Weight: 25 gr.

Notes

If equipped with cables with double insulation, this lampholder is suitable for Class II devices.



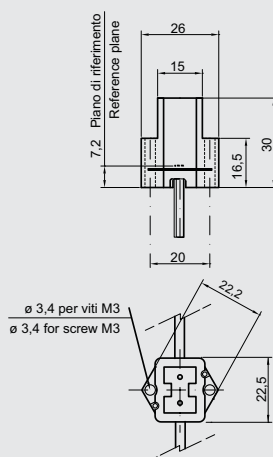
Attacco/Cap

GE,5

Per lampade a scarica di gas
For gaseous discharge lamps

ART. 029/XX

/XX lunghezza dei cavi in cm da stabilire in fase di ordine
/xx: is the cable length in cm to be defined before the order



Dati tecnici

- Corpo e coperchio in steatite
- Contatti in Cu Ni Zn
- Molle premicontatti in acciaio inox
- Fissaggio corpo con viti M3
- Cavo di collegamento standard: conduttore in rame nichelato, isolamento in gomma siliconica rinforzata (T max 180°C), lunghezza 25 cm, sezione 0,75 mm².

Altri tipi di cavo su richiesta.

- Tensione nominale: 750V
- Tensione max d'impulso: 5KV
- Corrente nominale: 2A
- Temp Max del portalamпада: 250°C
- Categoria di tenuta all'impulso: III
- Peso: 30 gr.

Nota

Il portalamпада è idoneo per l'impiego in apparecchi di Classe II, se equipaggiato con cavi in doppio isolamento.

Technical data

- Steatite body and cover
- Contacts made of Cu Ni Zn
- Contact pressing springs made of stainless steel
- Clamping screw M3
- Standard connection cable: nickel-plated copper conductor, reinforced silicone rubber insulation (max T 180°C), length 25 cm, section 0,75 mm².

Other types of leads are available on request.

- Nominal voltage: 750V
- Max rated pulse voltage: 5KV
- Nominal current: 2A
- Max working temperature: 250°C
- Impulse withstand category: III
- Weight: 30gr

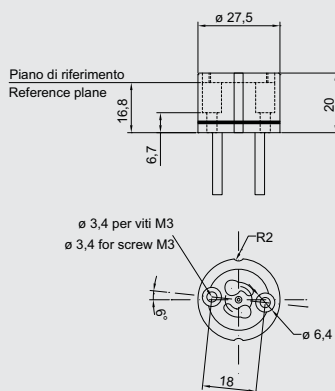
Notes

If equipped with cables with double isolation, this lampholder is suitable for Class II devices.

Per lampade a scarica di gas
For gaseous discharge lamps

ART. 060/XX

/XX lunghezza dei cavi in cm da stabilire in fase di ordine
/xx: is the cable length in cm to be defined before the order



Dati tecnici

- Corpo in steatite
- Coperchio in LCP
- Contatti in Cu Ni Zn
- Molle premicontatti in acciaio inox
- Fissaggio corpo con viti M3
- Cavo di collegamento standard: conduttore in rame nichelato, isolamento in gomma siliconica rinforzata (T max 180°C), lunghezza 25 cm, sezione 0,75 mm².

Altri tipi di cavo su richiesta.

- Tensione nominale: 750V
- Tensione max d'impulso: 5KV
- Corrente nominale: 2A
- Temp Max del portalamпада: 250°C
- Categoria di tenuta all'impulso: III
- Peso: 24 gr.

Nota

Il portalamпада è idoneo per l'impiego in apparecchi di Classe II, se equipaggiato con cavi in doppio isolamento.

Technical data

- Steatite body
- LCP cover
- Contacts made of Cu Ni Zn
- Contact pressing springs made of stainless steel
- Clamping screw M3
- Standard connection cable: nickel-plated copper conductor, reinforced silicone rubber insulation (max T 180°C), length 25 cm, section 0,75 mm².

Other types of leads are available on request.

- Nominal voltage: 750V
- Max rated pulse voltage: 5KV
- Nominal current: 2A
- Max working temperature: 250°C
- Impulse withstand category: III
- Weight: 24gr.

Notes

If equipped with cables with double isolation, this lampholder is suitable for Class II devices.

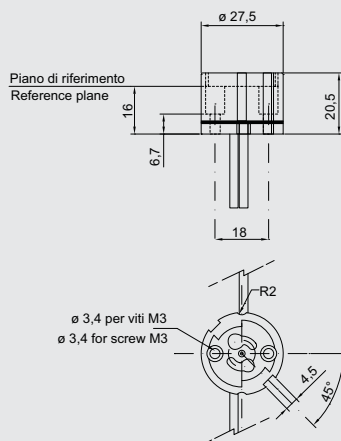
Attacco/Cap

G410

Per lampade a scarica di gas
For gaseous discharge lamps

BRT. 061/XX

/XX lunghezza dei cavi in cm da stabilire in fase di ordine
/xx: is the cable length in cm to be defined before the order



Dati tecnici

- Corpo in steatite
- Coperchio in LCP
- Contatti in Cu Ni Zn
- Molle premicontatti in acciaio inox
- Fissaggio corpo con viti M3
- Cavo di collegamento standard: conduttore in rame nichelato, isolamento in gomma siliconica rinforzata (T max 180°C), lunghezza 25 cm, sezione 0,75 mm².

Altri tipi di cavo su richiesta.

- Tensione nominale: 750V
- Tensione max d'impulso: 5KV
- Corrente nominale: 2A
- Temp Max del portalamпада: 250°C
- Categoria di tenuta all'impulso: III
- Peso: 22 gr.

Nota

Il portalamпада è idoneo per l'impiego in apparecchi di Classe II, se equipaggiato con cavi in doppio isolamento.

Technical data

- Steatite body
- LCP cover
- Contacts made of Cu Ni Zn
- Contact pressing springs made of stainless steel
- Clamping screws M3
- Standard connection cable: nickel-plated copper conductor, reinforced silicone rubber insulation (max T 180°C), length 25 cm, section 0,75 mm².

Other types of leads are available on request.

- Nominal voltage: 750V
- Max rated pulse voltage: 5KV
- Nominal current: 2A
- Max working temperature: 250°C
- Impulse withstand category: III
- Weight: 22gr.

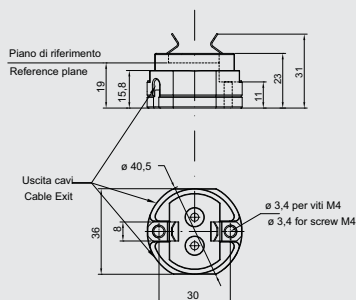
Notes

If equipped with cables with double isolation, this lampholder is suitable for Class II devices.



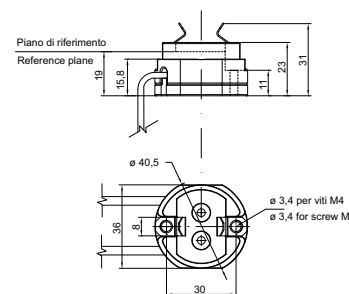
Per lampade a scarica di gas
For gaseous discharge lamps

ART. 035



ART. 035/XX

/XX lunghezza dei cavi in cm da stabilire in fase di ordine
/xx: is the cable length in cm to be defined before the order



Dati tecnici

- Corpo e coperchio in steatite
- Contatti in acciaio inox nichelato
- Molle premicontatti in acciaio inox
- Molle di tenuta lampada in acciaio inox
- Morsetti ad innesto rapido per fili rigidi o flessibili: sezione $0,5 \div 1 \text{ mm}^2$, \varnothing ext. max 4,5mm, se fili flessibili necessità di puntalino terminale di diametro max 2mm.
- Fissaggio corpo con viti M4
- Tensione nominale: 1000V
- Tensione max d'impulso: 5KV
- Corrente nominale: 4A
- Temp Max del portalamпада: 250°C
- Categoria di tenuta all'impulso: III
- Peso: 51 gr.

Nota

Il portalamпада è idoneo per l'impiego in apparecchi di Classe II, se equipaggiato con cavi in doppio isolamento.

Technical data

- Steatite body and cover
- Contacts made of nickel-plated stainless steel
- Contact pressing springs made of stainless steel
- Lamp-holding springs made of stainless steel
- Quick connection clamps for rigid or flexible wires: Section $0,5 \div 1 \text{ mm}^2$, \varnothing ext. max 4,5mm. If the wires are flexible, with terminal tip, max diameter 2mm.
- Clamping screws M4
- Nominal voltage: 1000V
- Max rated pulse voltage: 5KV
- Nominal current: 4A
- Max working temperature: 250°C
- Impulse withstand category: III
- Weight: 51gr.

Notes

If equipped with cables with double isolation, this lampholder is suitable for Class II devices.

Come articolo 035 ma fornito con cavi già connessi.

Cavo di collegamento standard: conduttore in rame nichelato, isolamento in gomma silconica rinforzata (T max 180°C), lunghezza 25 cm, sezione 0,75 mm².

Altri tipi di cavo su richiesta.

Peso: 60 gr.

As art. 035, but supplied with cables already connected.

Standard connection cable: Nickel-plated copper conductor, reinforced silicone rubber insulation (max T180°C), length 25 cm, section 0,75mm².

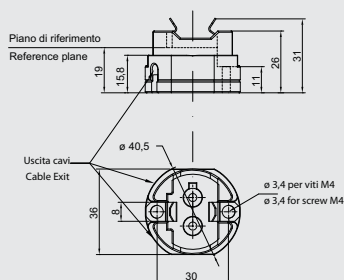
Other types of leads are available on request. Weight: 60gr.

Attacco/Cap

G412-1

Per lampade a scarica di gas
For gaseous discharge lamps

ART. 036



Dati tecnici

- Corpo e coperchio in steatite
- Contatti in acciaio inox nichelato
- Molle premicontatti in acciaio inox
- Molle di tenuta lampada in acciaio inox
- Morsetti ad innesto rapido per fili rigidi o flessibili: sezione 0,5÷1 mm², ø ext. max 4,5mm, se fili flessibili necessità di puntalino terminale di diametro max 2mm.
- Fissaggio corpo con viti M4
- Tensione nominale: 1000V
- Tensione max d'impulso: 5KV
- Corrente nominale: 4A
- Temp Max del portalamпада: 250°C
- Categoria di tenuta all'impulso: III
- Peso: 55 gr.

Nota

Il portalamпада è idoneo per l'impiego in apparecchi di Classe II, se equipaggiato con cavi in doppio isolamento.

Technical data

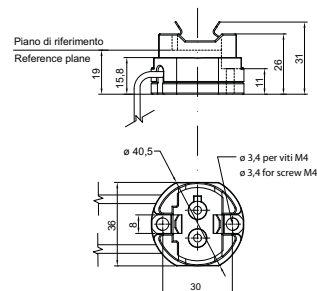
- Steatite body and cover
- Contacts made of nickel-plated stainless steel
- Contact pressing springs made of stainless steel
- Lamp-holding springs made of stainless steel
- Quick connection clamps for rigid or flexible wires: Section 0,5÷1 mm², ø ext. max 4,5mm. If the wires are flexible, with terminal tip, max diameter 2mm.
- Clamping screws M4
- Nominal voltage: 1000V
- Max rated pulse voltage: 5KV
- Nominal current: 4A
- Max working temperature: 250°C
- Impulse withstand category: III
- Weight: 55gr.

Notes

If equipped with cables with double isolation, this lampholder is suitable for Class II devices.

ART. 036/XX

/XX lunghezza dei cavi in cm da stabilire in fase di ordine
/xx: is the cable length in cm to be defined before the order



Come articolo 036 ma fornito con cavi già connessi.

Cavo di collegamento standard: conduttore in rame nichelato, isolamento in gomma silicica rinforzata (T max 180°C), lunghezza 25 cm, sezione 0,75 mm².

Altri tipi di cavo su richiesta.

Peso: 64 gr.

As art. 036, but supplied with cables already connected

Standard connection cable: Nickel-plated copper conductor, reinforced silicone rubber insulation (max T180°C), length 25cm, section 0,75mm².

Other types of leads are available on request. Weight: 64gr

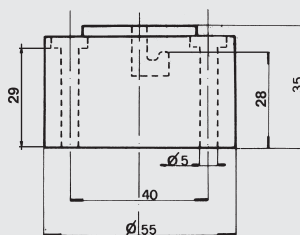
Attacco/Cap

BY220



Per lampade a scarica a vapori di sodio a bassa pressione
For low pressure sodium vapour discharge lamps

ART. 0102



Dati tecnici

- Basetta in porcellana
- Coperchio di protezione in bakelite
- Contatti in ottone tornito e nichelato
- Morsetti a bussola in ottone nichelato idonei per fili da 1 ÷ 4 mm²
- Molla premicontatti in acciaio inox
- Tensione nominale: 500 V
- Corrente nominale: 4 A
- Temperatura max del portalamпада: 170°C
- Categoria di tenuta all'impulso: III
- Peso: 110 gr.

Technical data

- Porcelain base
- Bakelite protective cover
- Nickel-plated turned brass contacts
- Nickel-plated connector terminals suitable for leads from 1 ÷ 4 mm²
- Contact pressing springs made of stainless steel
- Nominal voltage: 500 V
- Nominal current: 4 A
- Max nominal working temperature: 170°C
- Impulse withstand category: III
- Weight: 110 gr.



Design by
Telonius Whitehead
2009



OMT S.R.L.
Via Tito Speri 7/E
25040 Nigoline di Cortefranca (BS)
tel. 030984128 - 030984181
fax 030984256
info@omtsrl.com
C.F./P. IVA 00219160173