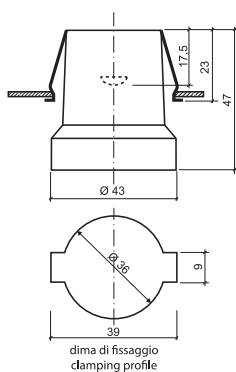


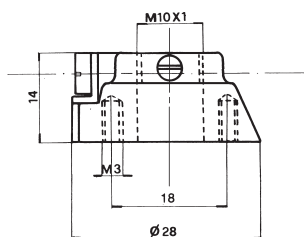
ART. 0113/U



Portalamпада assembled with rapid hooking U-spring (our art. 050/14), for walls with thickness from 0,5 ÷ 2 mm².
Peso: 65 gr.

*Lampholder assembled with rapid hooking U-spring (our art. 050/14), for walls with thickness from 0,5 ÷ 2 mm².
Weight: 65 gr.*

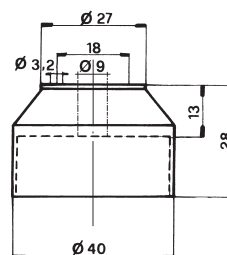
ART. 0154



Raccordo in alluminio pressofuso conico. Filetto femmina da 10x1 con vite di bloccaggio Tige. Vite per messa a terra per fili 0,5 ÷ 2,5 mm².
Peso: 10 gr.

*Conical connection made of die-cast aluminium. 10x1 female thread with Tige locking screw. Earth screw for leads from 0.5 to 2.5 mm²
Weight: 10 gr.*

ART. 0204



Cappuccio in materiale termoplastico per doppio isolamento completo di piastrina per isolamento vite M3.
Art. 0204/A
Su richiesta con filetto femmina da 10x1.
Peso: 12 gr.

*Thermoplastic cap for double insulation, complete with plate for M3 insulation screw.
Art. 0204/A
Available with 10x1 female thread on request.
Weight: 12 gr.*