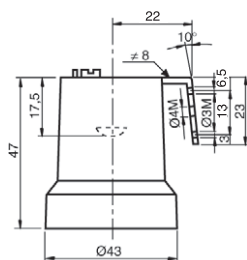


ART. 0113/D



Portalampada assemblato con staffa a 100° in ferro zincato, completa di vite per messa a terra idonea per fili 0,5 ÷ 2,5 mm².
Peso: 65 gr.

Art. 0113/D3

Stesso portalampada, senza vite di messa a terra.

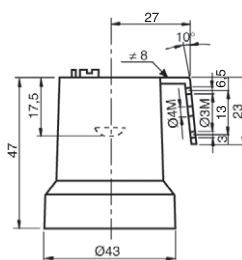
Lampholder assembled with 100° galvanized iron clamping plate, complete with earth screw, suitable for leads 0,5 ÷ 2,5 mm².

Weight: 65 gr.

Art. 0113/D3

Same lampholder, without earth screw.

ART. 0113/D1



Portalampada assemblato con staffa a 100° in ferro zincato, completa di vite per messa a terra idonea per fili 0,5 ÷ 2,5 mm².
Peso: 65 gr.

Art. 0113/D1

Stesso portalampada, senza vite di messa a terra.

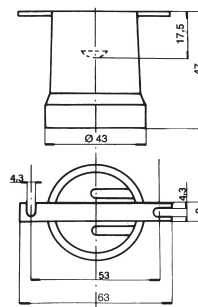
Lampholder assembled with 100° galvanized iron clamping plate, complete with earth screw, suitable for leads 0,5 ÷ 2,5 mm².

Weight: 65 gr.

Art. 0113/D1

Same lampholder, without earth screw.

ART. 0113/G



Portalampada assemblato con staffa diritta in ferro zincato (ns. art. 050/20).
Peso: 67 gr.

Lampholder assembled with straight galvanized iron clamping plate (our art. 050/20).

Weight: 67 gr.