

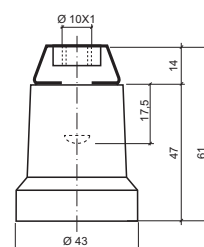
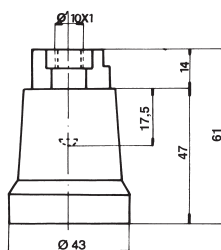
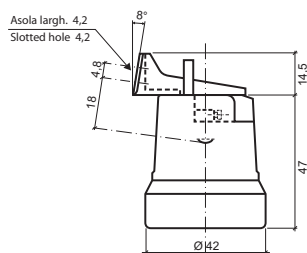
Attacco/Cap  
**E27**

Per lampade ad incandescenza e scarica  
*For incandescent and discharge lamps*

**ART. 0113/H**

**ART. 0113/P**

**ART. 0113/P1**



Portalamпада assemblato con staffa  
 98° in termoplastico PET bianco (staffa  
 ns. art. 0113/9).  
 Peso: 63 gr.

*White PET thermoplastic lampholder  
 assembled with 98° clamping plate  
 (Our art 0113/9).  
 Weight: 63 gr.*

Portalamпада assemblato con raccordo  
 in alluminio pressofuso (ns. art. 0152).  
 Filetto femmina da 10x1 con vite di  
 bloccaggio Tige. Vite per messa a terra  
 per fili 0,5 ÷ 2,5 mm<sup>2</sup>.  
 Peso: 68 gr.

*Lampholder assembled with die-cast  
 aluminium jumper connection (our art.  
 0152). 10x1 female thread with Tige  
 locking screw for leads 0,5 ÷ 2,5 mm<sup>2</sup>.  
 Weight: 68 gr.*

Portalamпада assemblato con  
 raccordo in ferro (ns articolo 0155).  
 Filetto femmina da 10X1 con vite di  
 bloccaggio Tige. Vite per messa a terra  
 per fili 0,5 ÷ 2,5 mm<sup>2</sup>.  
 Peso: 68 gr.

*Lampholder assembled with iron jumper  
 connection (our art. 0155). 10x1 female  
 thread with Tige locking screw for leads  
 0,5 ÷ 2,5 mm<sup>2</sup>.  
 Weight: 68 gr.*