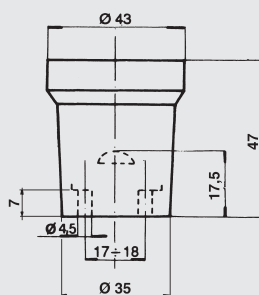
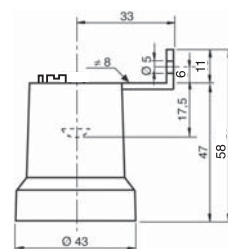


Per lampade ad incandescenza e scarica  
For incandescent and discharge lamps

**ART. 0113**



**ART. 0113/B**



### Dati tecnici

- Corpo in porcellana
- Contatti in ottone ramato
- Morsetti a bussola in ottone idonei per fili 0,5 ÷ 2,5 mm<sup>2</sup>
- Tensione nom.: 250V
- Corrente nom.: 4A
- Temperatura max del portalamпада: 210° C
- Tensione d'impulso max: 5 kV
- Categoria di tenuta all'impulso: II
- Peso: 60 gr.

### Nota

Data la particolare resistenza termica del portalamпада in porcellana, esso è indicato anche per l'uso con lampade alogene a tensione di rete.

### Technical data

- Porcelain body
- Coppered brass contacts
- Brass connectors terminals suitable for leads 0,5 ÷ 2,5 mm<sup>2</sup>
- Nominal voltage: 250V
- Nominal current: 4A
- Nominal highest working temperature: 210°C
- Maximum rated pulse voltage: 5 kV
- Impulse withstand category: II
- Weight: 60 gr.

### Notes

In consideration of its particularly high thermal resistance, this porcelain lampholder can be used also with mains voltage halogen lamps.

Portalamпада assemblato con staffa a 90° in ferro zincato (ns. art. 050/16), completa di vite per messa a terra idonea per fili 0,5 ÷ 2,5 mm<sup>2</sup>.  
Peso: 65 gr.

Lampholder assembled with 90° galvanized iron camping plate (our art. 050/16), complete with earth screw, suitable for leads 0,5 ÷ 2,5 mm<sup>2</sup>.  
Weight: 65 gr.

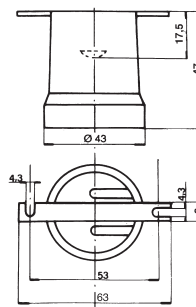
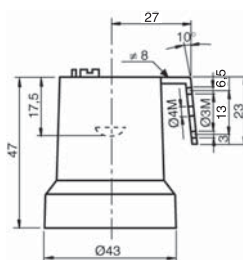
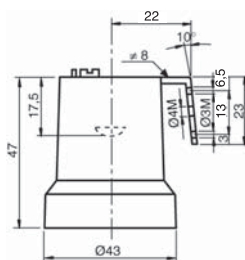
Attacco/Cap  
**E27**

Per lampade ad incandescenza e scarica  
*For incandescent and discharge lamps*

**ART. 0113/D**

**ART. 0113/D1**

**ART. 0113/G**



Portalamпада assemblato con staffa a 100° in ferro zincato, completa di vite per messa a terra idonea per fili 0,5 ÷ 2,5 mm<sup>2</sup>.  
 Peso: 65 gr.

**Art. 0113/D3**

Stesso portalamпада, senza vite di messa a terra.

*Lampholder assembled with 100° galvanized iron clamping plate, complete with earth screw, suitable for leads 0,5 ÷ 2,5 mm<sup>2</sup>.*

*Weight: 65 gr.*

**Art. 0113/D3**

*Same lampholder, without earth screw.*

Portalamпада assemblato con staffa a 100° in ferro zincato, completa di vite per messa a terra idonea per fili 0,5 ÷ 2,5 mm<sup>2</sup>.  
 Peso: 65 gr.

**Art. 0113/D1**

*Lampholder assembled with 100° galvanized iron clamping plate, complete with earth screw, suitable for leads 0,5 ÷ 2,5 mm<sup>2</sup>.*

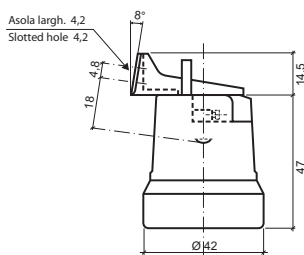
*Weight: 65 gr.*

Portalamпада assemblato con staffa dritta in ferro zincato (ns. art. 050/20).  
 Peso: 67 gr.

*Lampholder assembled with straight galvanized iron clamping plate (our art. 050/20).*

*Weight: 67 gr.*

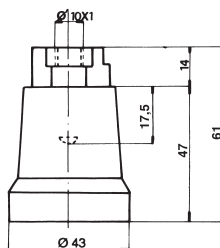
## ART. 0113/H



Portalampada assemblato con staffa 98° in termoplastico PET bianco (staffa ns. art. 0113/9).  
Peso: 63 gr.

*White PET thermoplastic lampholder assembled with 98° clamping plate (Our art 0113/9).  
Weight: 63 gr.*

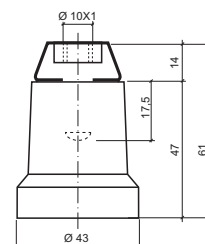
## ART. 0113/P



Portalampada assemblato con raccordo in alluminio pressofuso (ns. art. 0152). Filetto femmina da 10x1 con vite di bloccaggio Tige. Vite per messa a terra per fili 0,5 ÷ 2,5 mm<sup>2</sup>.  
Peso: 68 gr.

*Lampholder assembled with die-cast aluminium jumper connection (our art. 0152). 10x1 female thread with Tige locking screw for leads 0,5 ÷ 2,5 mm<sup>2</sup>.  
Weight: 68 gr.*

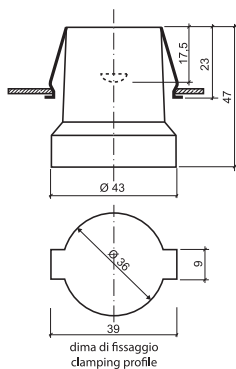
## ART. 0113/P1



Portalampada assemblato con raccordo in ferro (ns articolo 0155). Filetto femmina da 10X1 con vite di bloccaggio Tige. Vite per messa a terra per fili 0,5 ÷ 2,5 mm<sup>2</sup>.  
Peso: 68 gr.

*Lampholder assembled with iron jumper connection (our art. 0155). 10x1 female thread with Tige locking screw for leads 0,5 ÷ 2,5 mm<sup>2</sup>.  
Weight: 68 gr.*

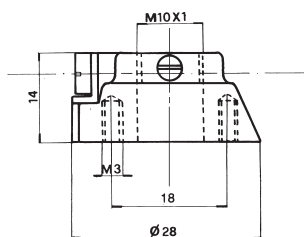
## ART. 0113/U



Portalamпада assembled with rapid hooking U-spring (our art. 050/14), for walls with thickness from 0,5 ÷ 2 mm<sup>2</sup>.  
Peso: 65 gr.

*Lampholder assembled with rapid hooking U-spring (our art. 050/14), for walls with thickness from 0,5 ÷ 2 mm<sup>2</sup>.  
Weight: 65 gr.*

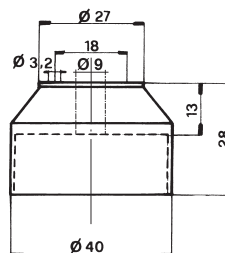
## ART. 0154



Raccordo in alluminio pressofuso conico. Filetto femmina da 10x1 con vite di bloccaggio Tige. Vite per messa a terra per fili 0,5 ÷ 2,5 mm<sup>2</sup>.  
Peso: 10 gr.

*Conical connection made of die-cast aluminium. 10x1 female thread with Tige locking screw. Earth screw for leads from 0.5 to 2.5 mm<sup>2</sup>  
Weight: 10 gr.*

## ART. 0204



Cappuccio in materiale termoplastico per doppio isolamento completo di piastrina per isolamento vite M3.  
**Art. 0204/A**  
Su richiesta con filetto femmina da 10x1.  
Peso: 12 gr.

*Thermoplastic cap for double insulation, complete with plate for M3 insulation screw.  
**Art. 0204/A**  
Available with 10x1 female thread on request.  
Weight: 12 gr.*